

# *ITRF datum and ILRS network geometry*

**e-GEOS**

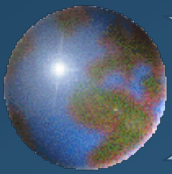
V. Luceri  
e-GEOS S.p.A., CGS - Matera



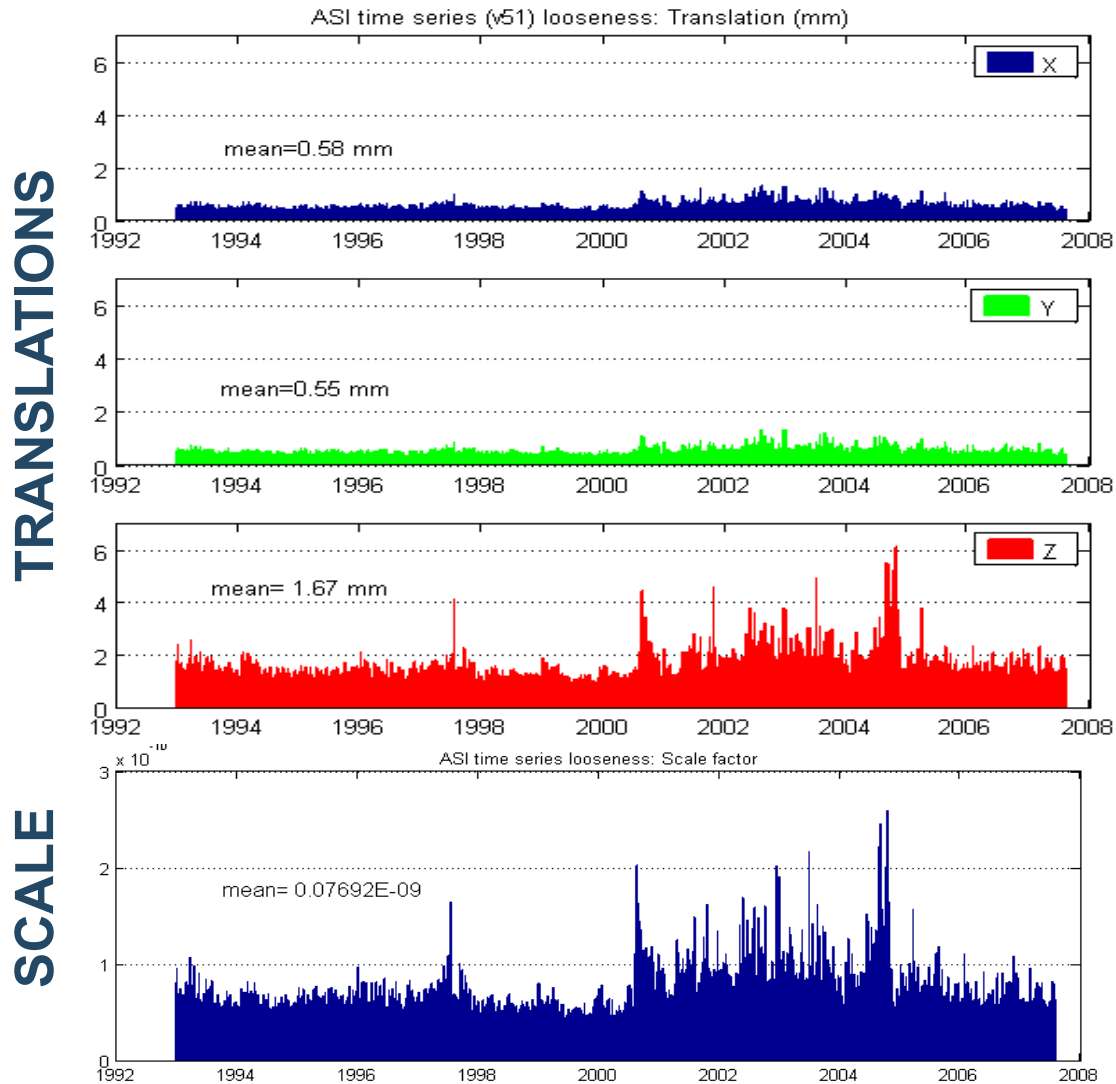
G. Bianco, M. Virelli  
Agenzia Spaziale Italiana, CGS - Matera

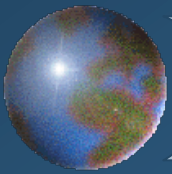


C. Sciarretta  
Telespazio S.p.A., CGS - Matera



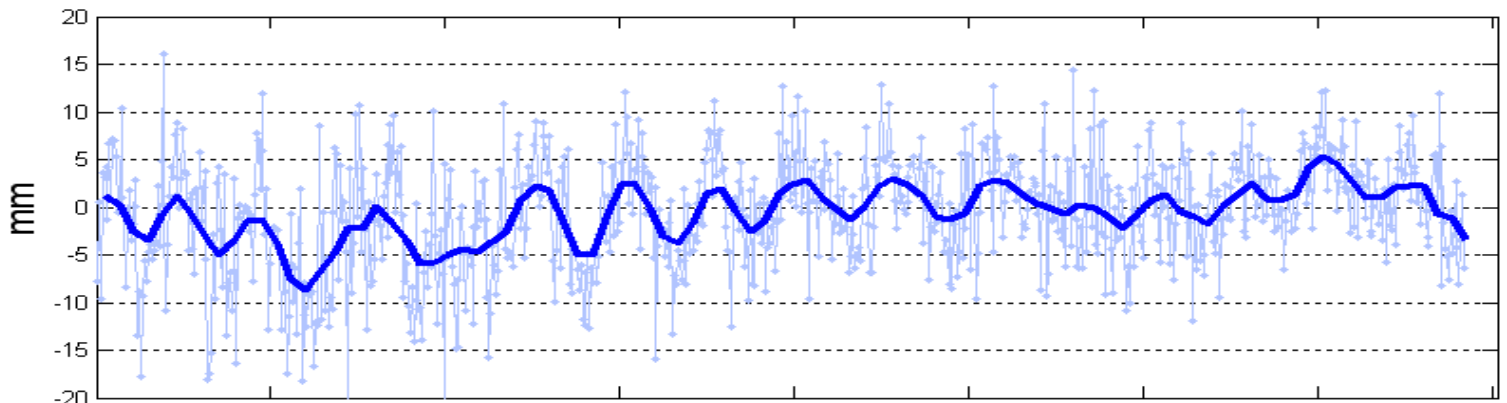
# The SLR sensitivity to the TRF datum



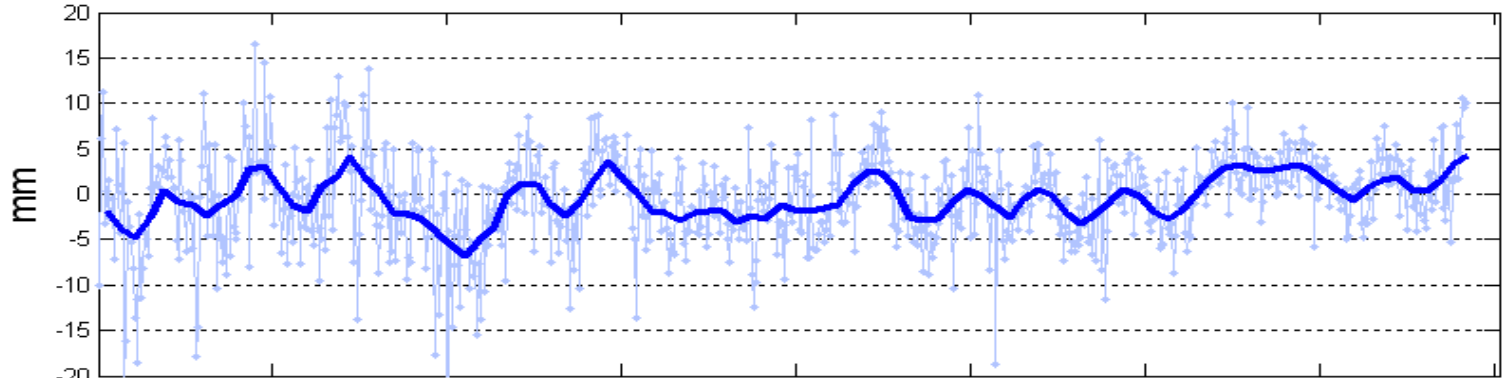


# Translations to SLRF2005 (ASI v12 time series)

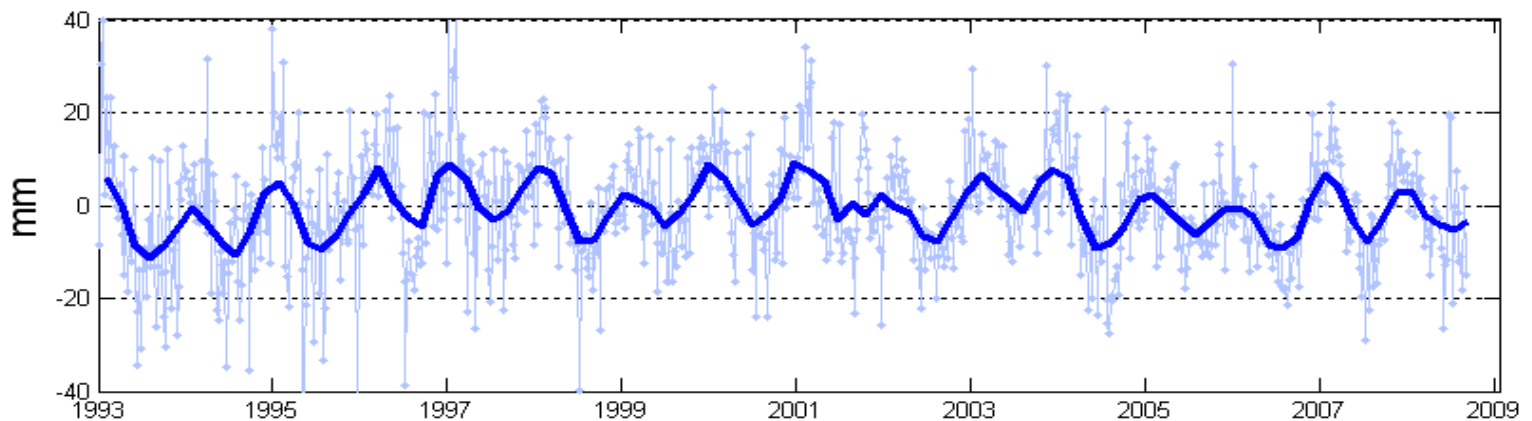
TX

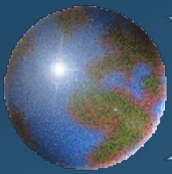


TY

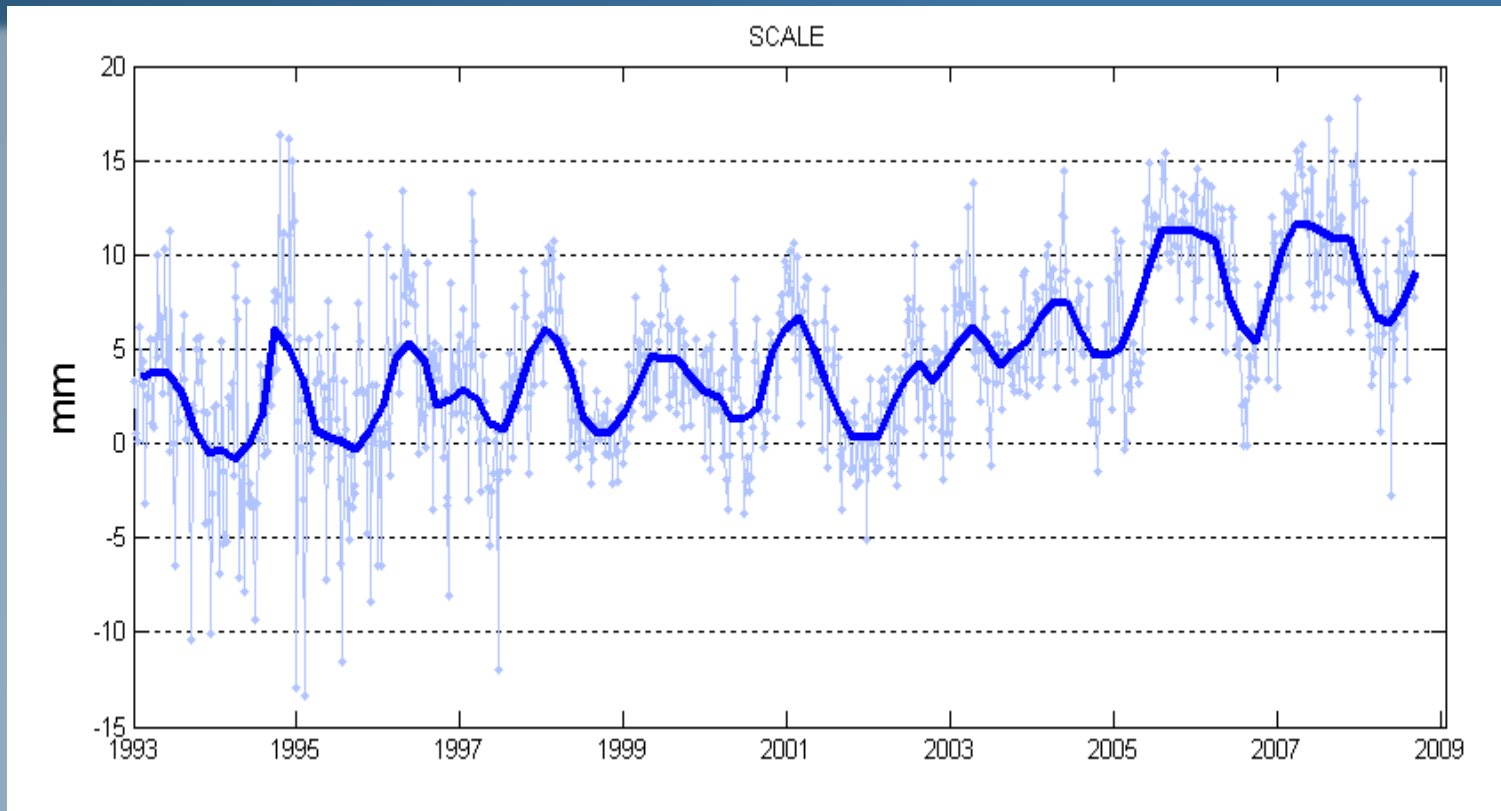


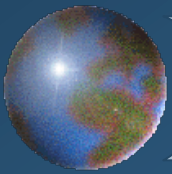
TZ



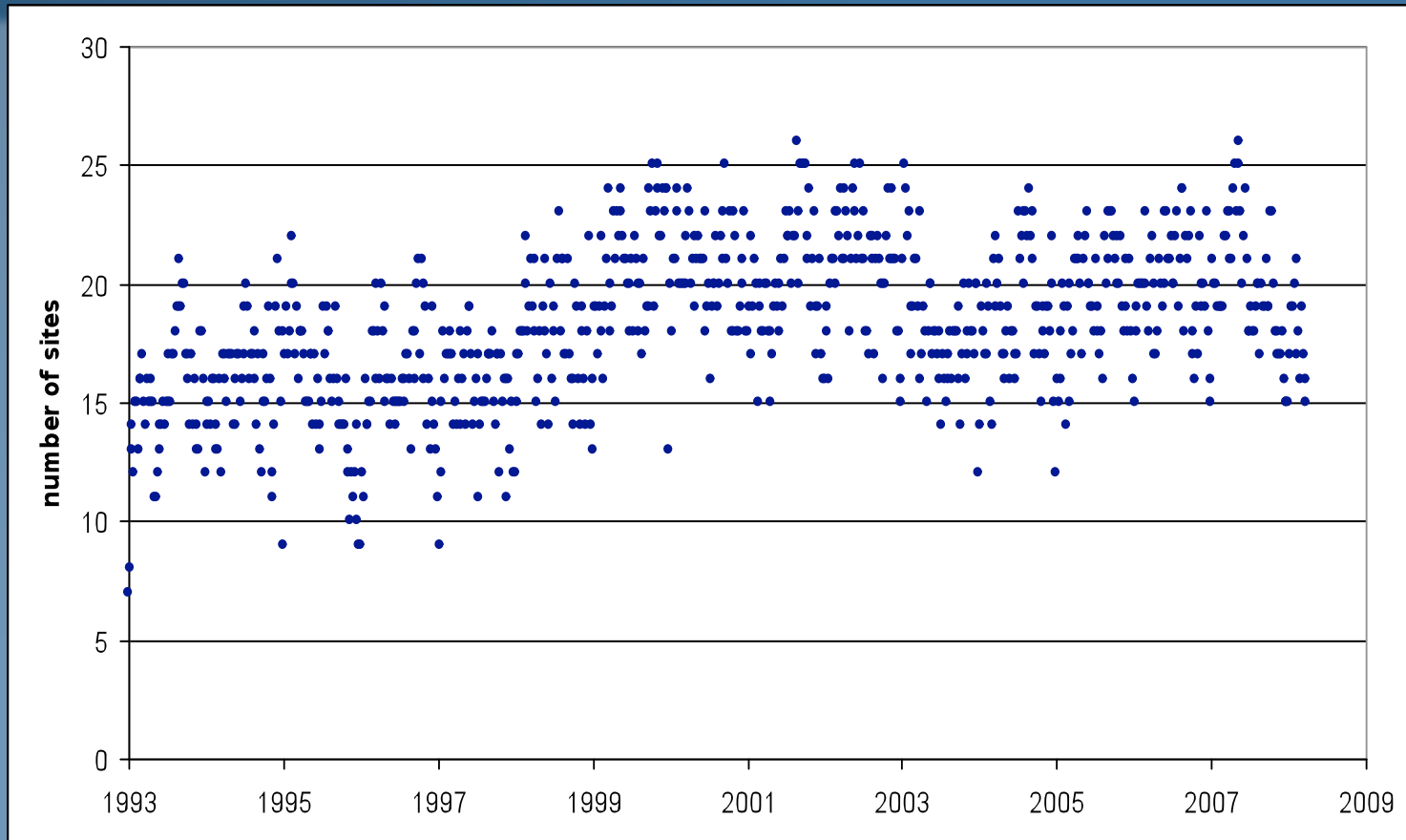


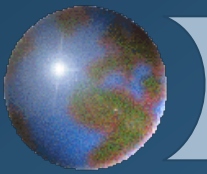
# Scale to SLRF2005 (ASI v12 time series)



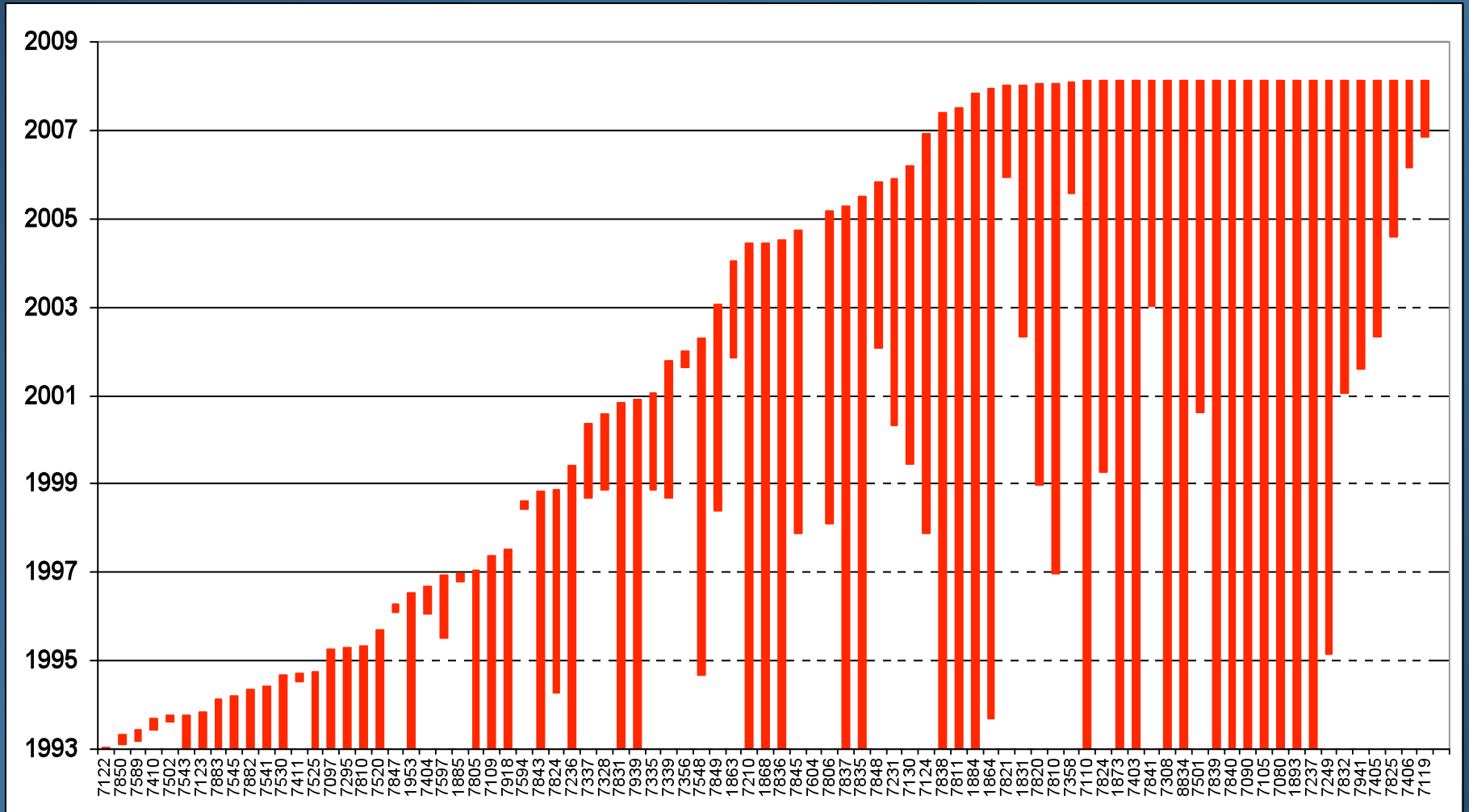


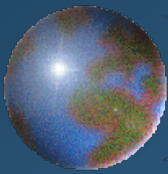
# The number of sites in the SLR network



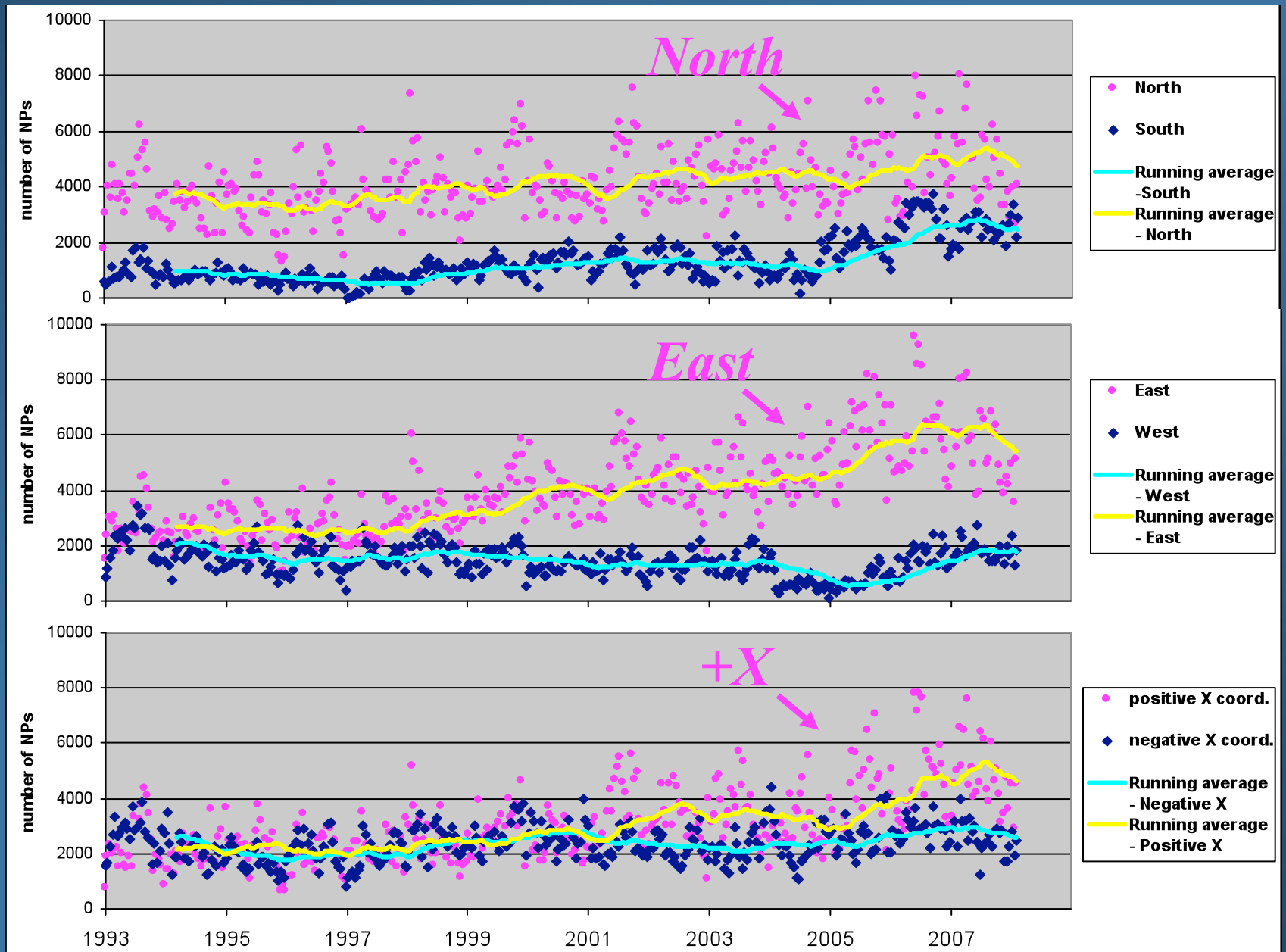


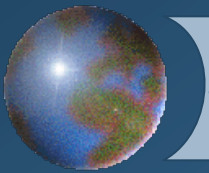
# The SLR network temporal coverage





# LAGEOS 1/2 data Geographical distribution





# The data barycenter

A weekly time series of the LAGEOS 1/2 *data barycenter* has been computed, expressed as coordinates ( $dX, dY, dZ$ ) in the ITRF reference frame.

$$dX = \sum_i X_i n_i / N_{tot}$$

$$dY = \sum_i Y_i n_i / N_{tot}$$

$$dZ = \sum_i Z_i n_i / N_{tot}$$

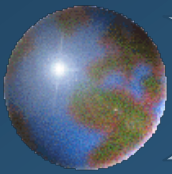
where:

$X_i, Y_i, Z_i$  : X, Y, Z coordinate of the i-th site of the week

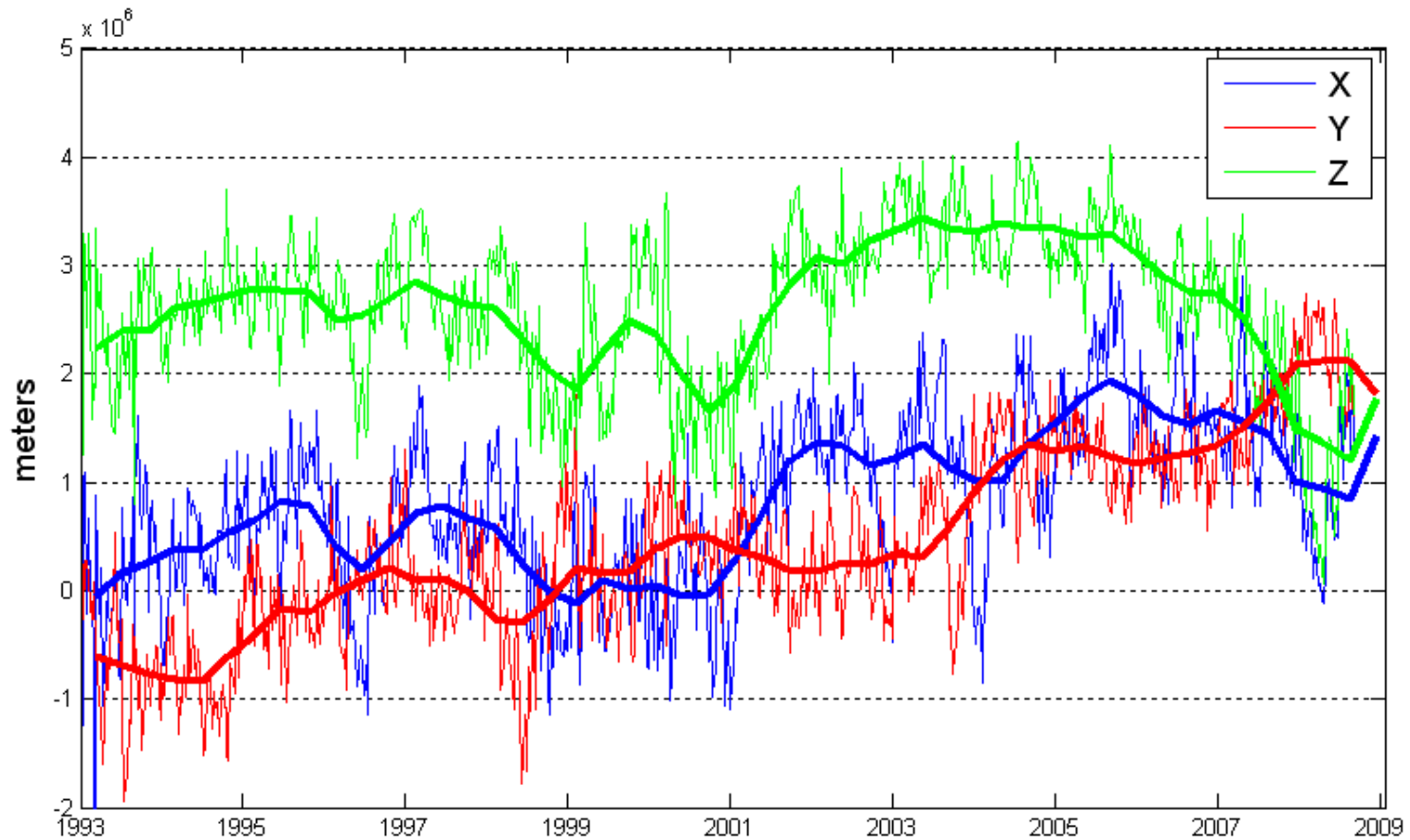
$n_i$  : number of observations of the i-th site of the week

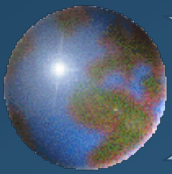
$N_{tot}$  : total number of observations in the week



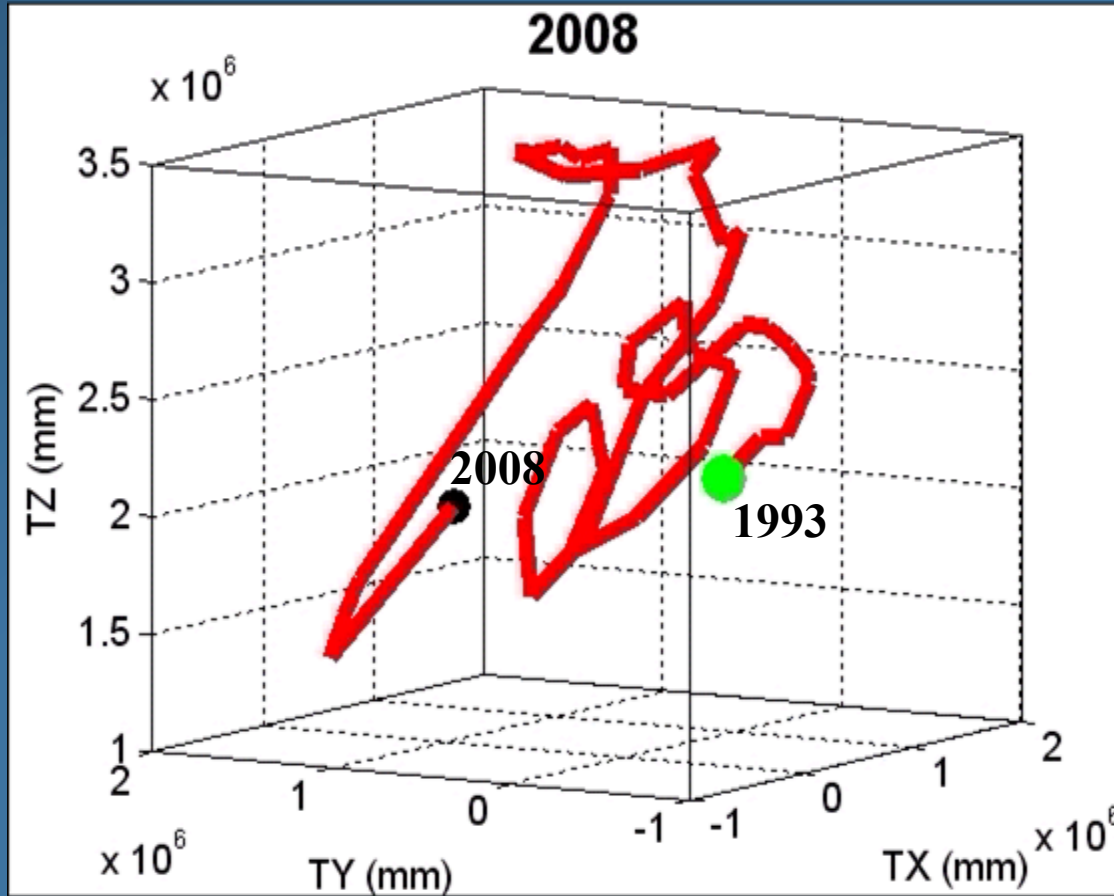


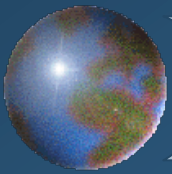
# The data barycenter



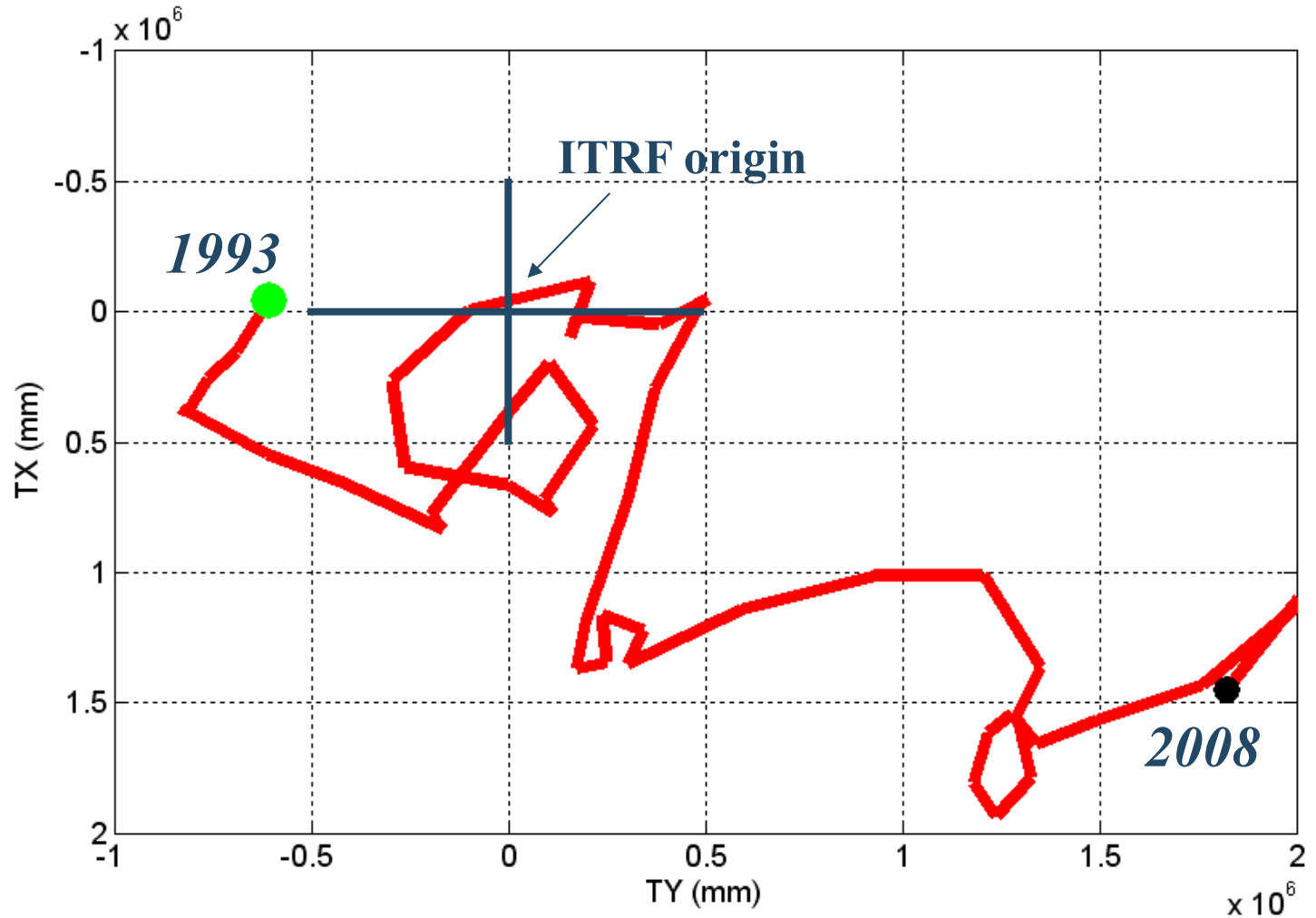


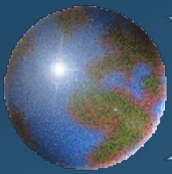
# 3D data barycenter evolution



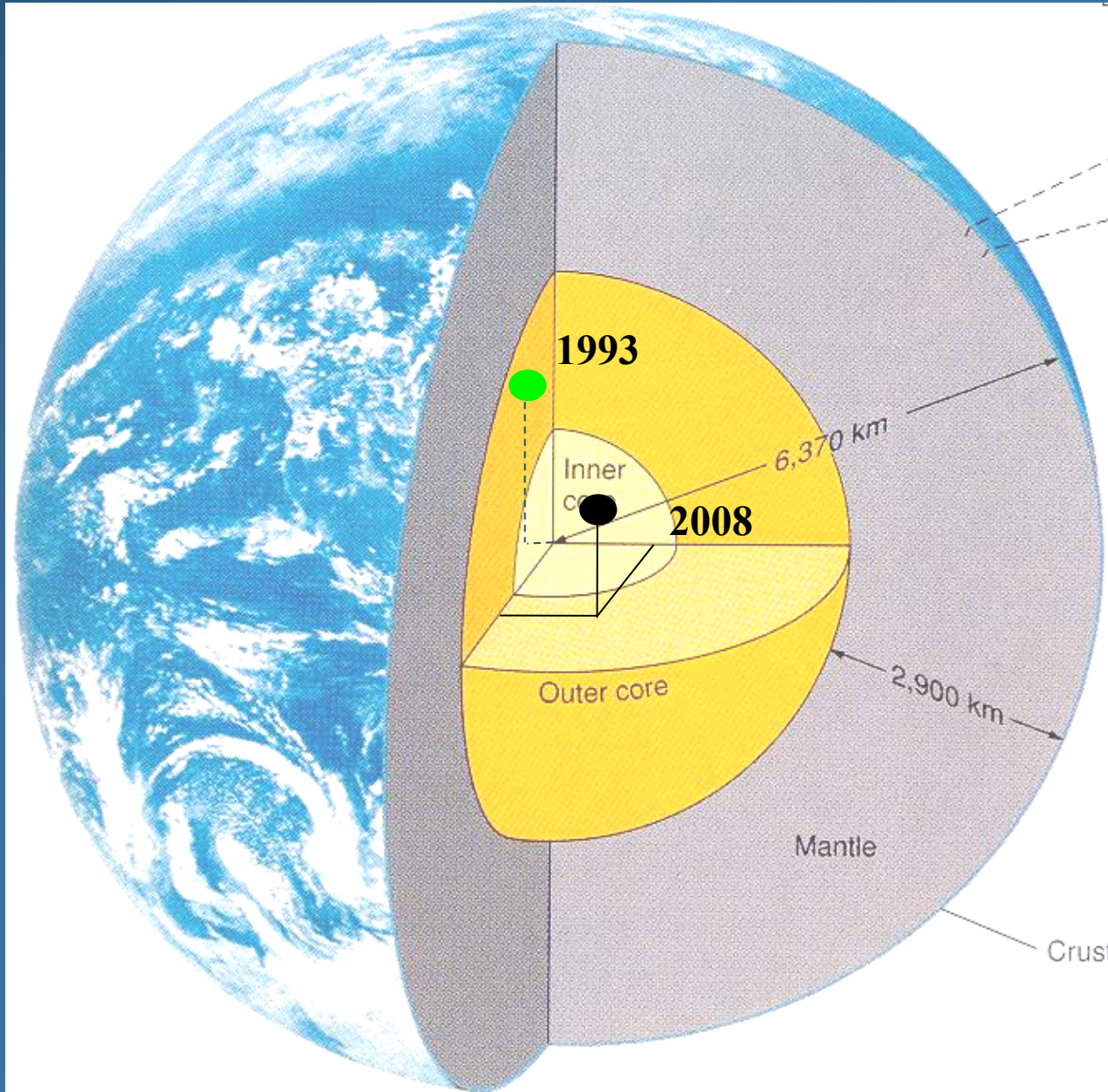


# Data barycenter on the XY plane

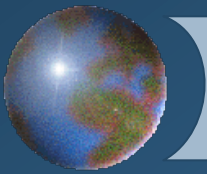




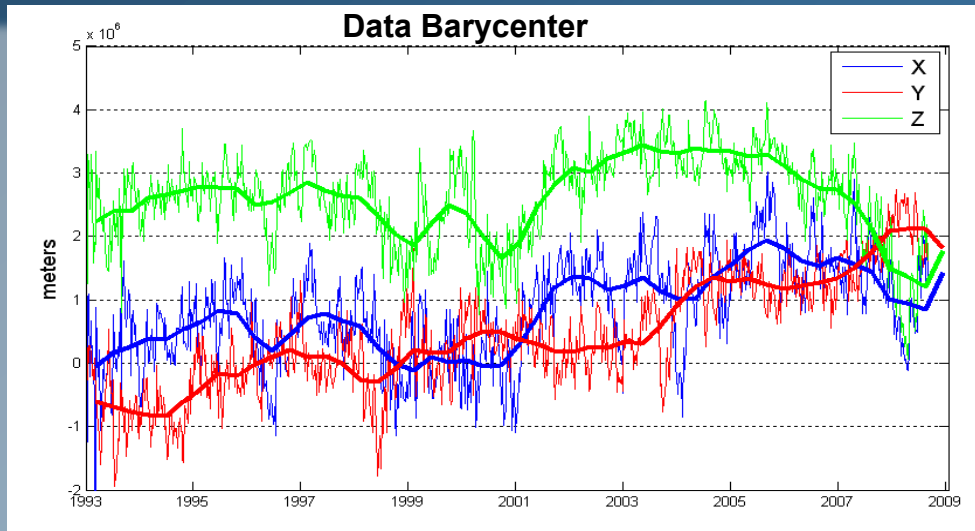
# The data barycenter position



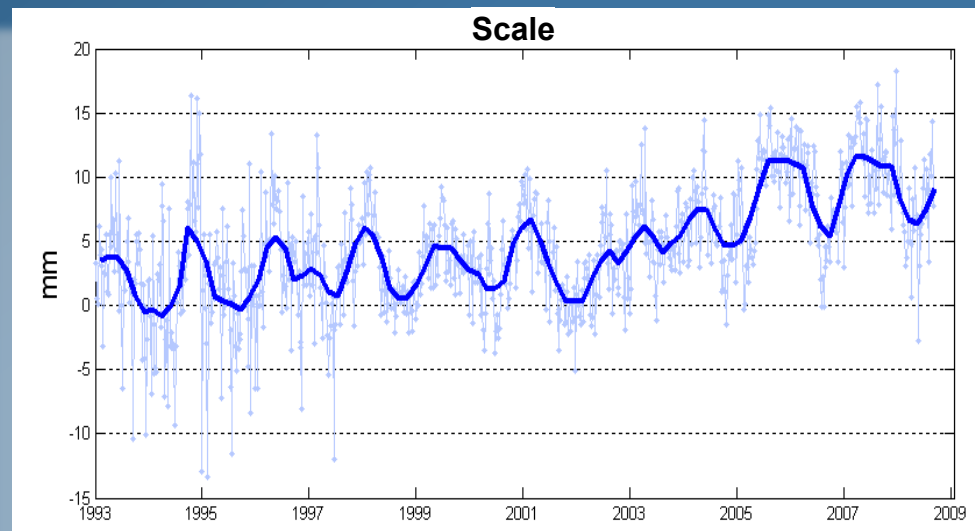


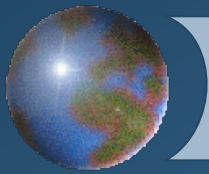


# Correlations

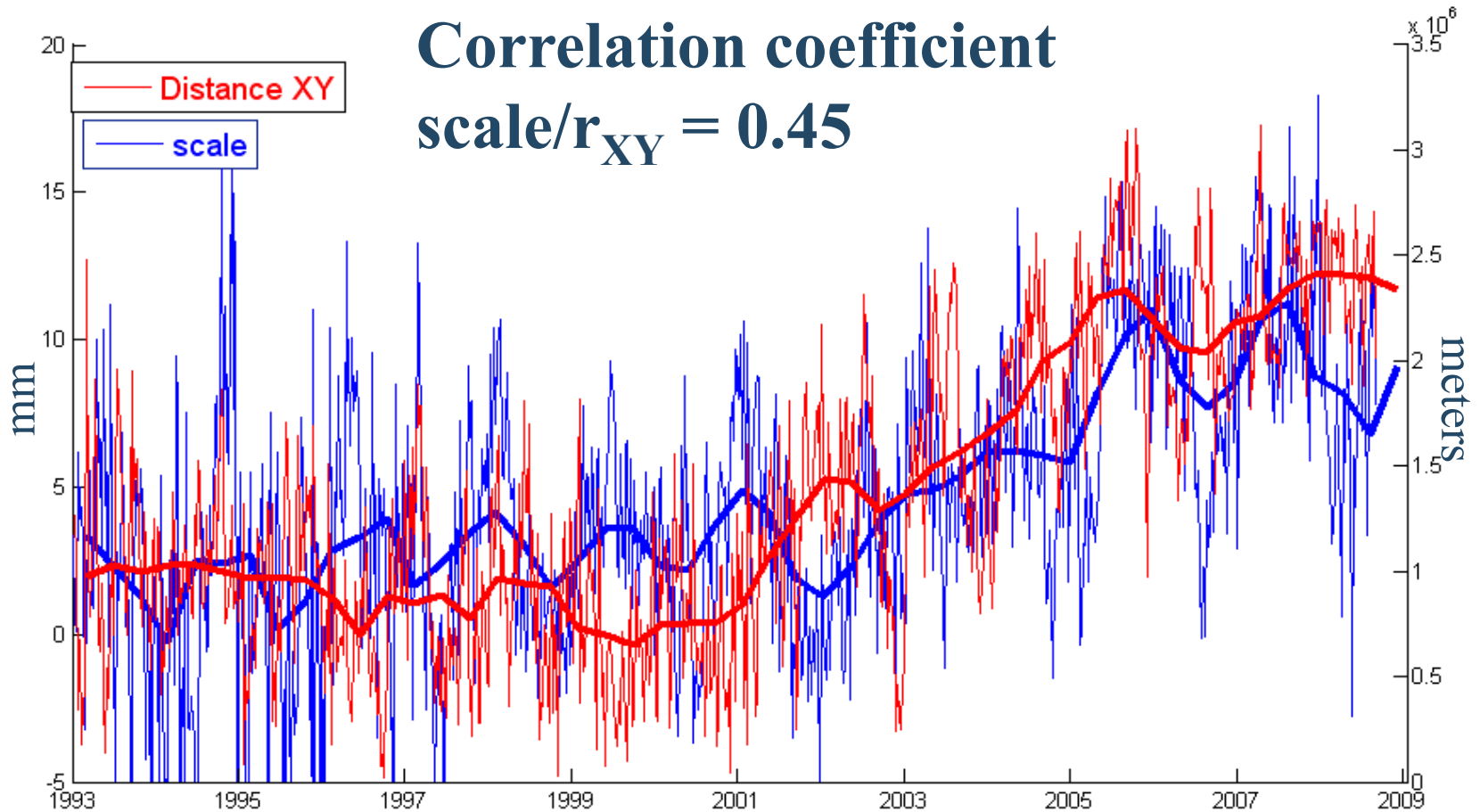


**Correlation coefficients**  
**scale/X = 0.32**  
**scale/Y = 0.45**  
**scale/Z = 0.06**

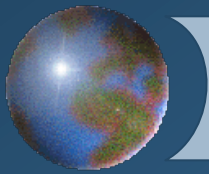




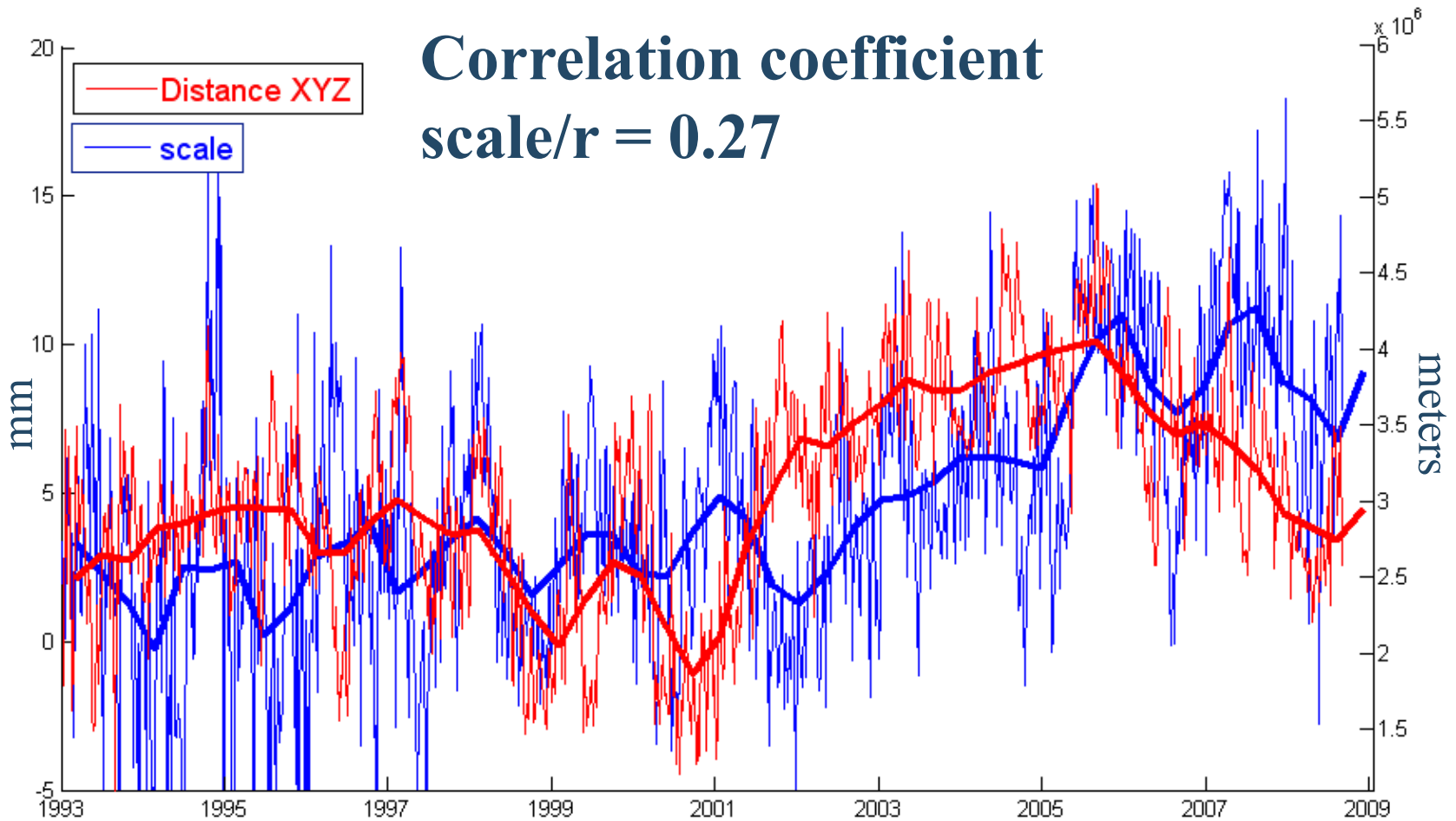
# XY eccentricity vs scale



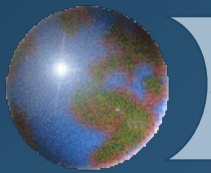
$r_{XY}$  = distance of the data barycenter from the ITRF origin, in the XY plane (equator)



# 3D eccentricity vs scale



**r = distance of the data barycenter from the ITRF origin**



## Concluding remarks

- Unbalanced data distribution since 2002
- Possible effect of the longitudinal data distribution on the scale to SLRF2005
- No evidence of the North/South data distribution influence on the scale to SLRF2005
- Further investigations with network simulation to:
  - ✓ assess the correlation scale/data barycenter
  - ✓ check the reliability of scale estimation