

# Design and qualification of a recessed satellite cornercube retroreflector for ground-based attitude determination via satellite laser ranging

Nils Bartels<sup>1</sup>, Paul Allenspacher<sup>1</sup>, Sven Bauer<sup>2</sup>, Daniel Hampf<sup>1</sup>, Benjamin Rödiger<sup>3</sup>, Wolfgang Riede<sup>1</sup>

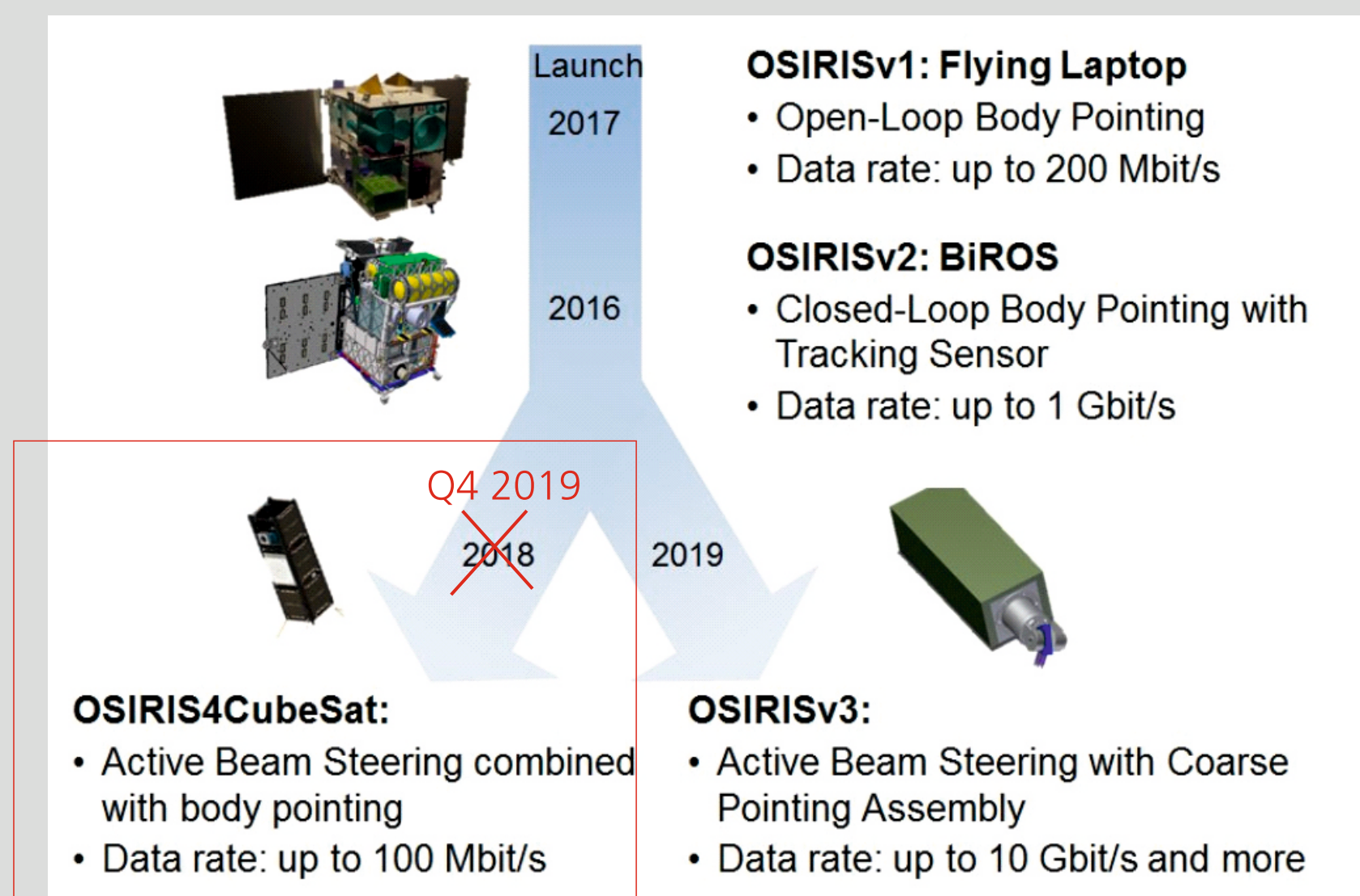
1) Deutsches Zentrum für Luft- und Raumfahrt (DLR), Institut für Technische Physik, Pfaffenwaldring 38-40, 70569 Stuttgart, Germany

2) Helmholtz-Zentrum Potsdam, Deutsches Geoforschungszentrum, Telegrafenberg, 14473 Potsdam, Germany

3) Deutsches Zentrum für Luft- und Raumfahrt (DLR), Institut für Kommunikation und Navigation, Münchner Straße 20, Oberpfaffenhofen, 82234 Wessling, Germany

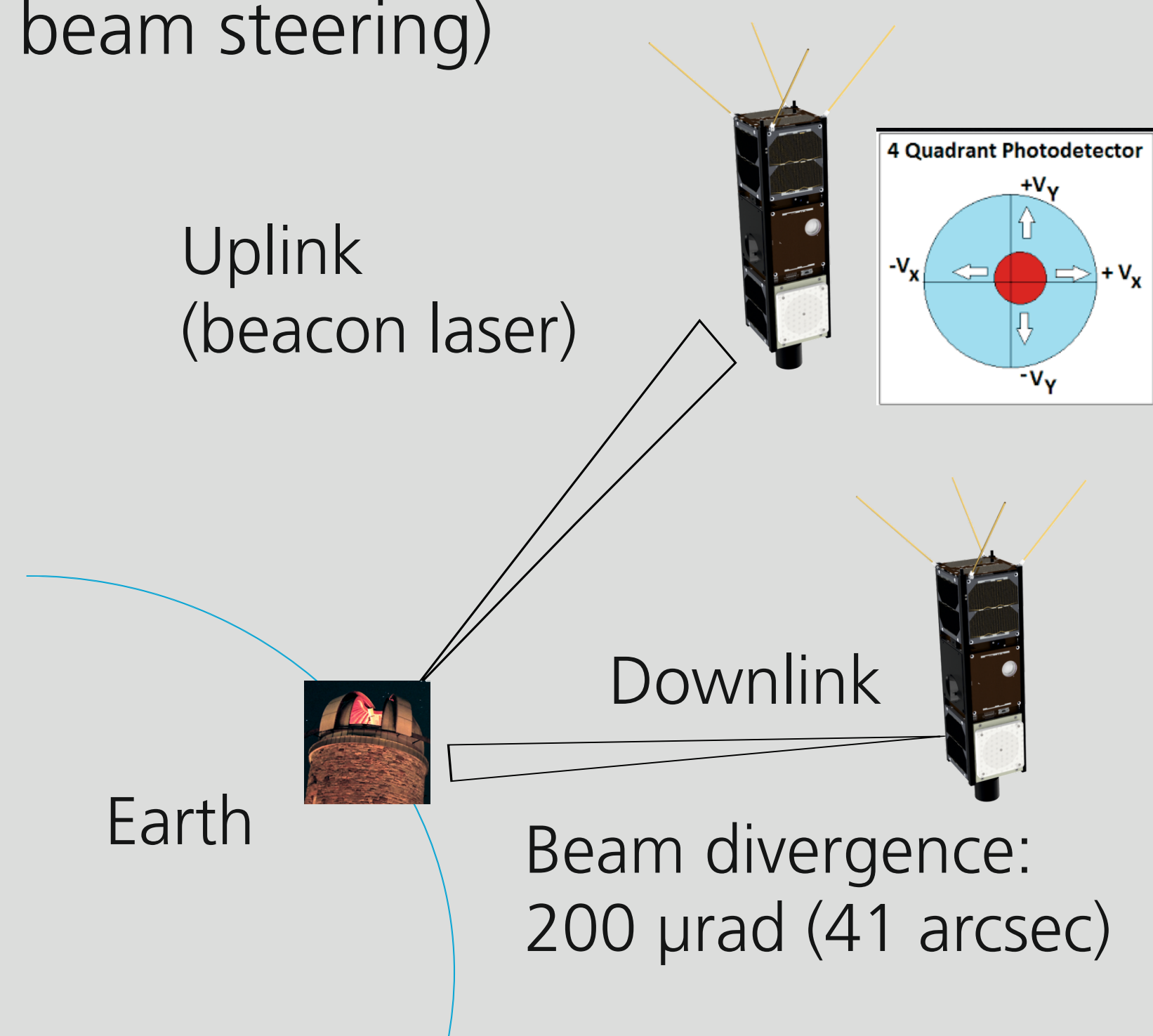
## Introduction

The German Aerospace Center (DLR) is working on the development of compact laser communication payloads for low-earth orbit (LEO) satellites.



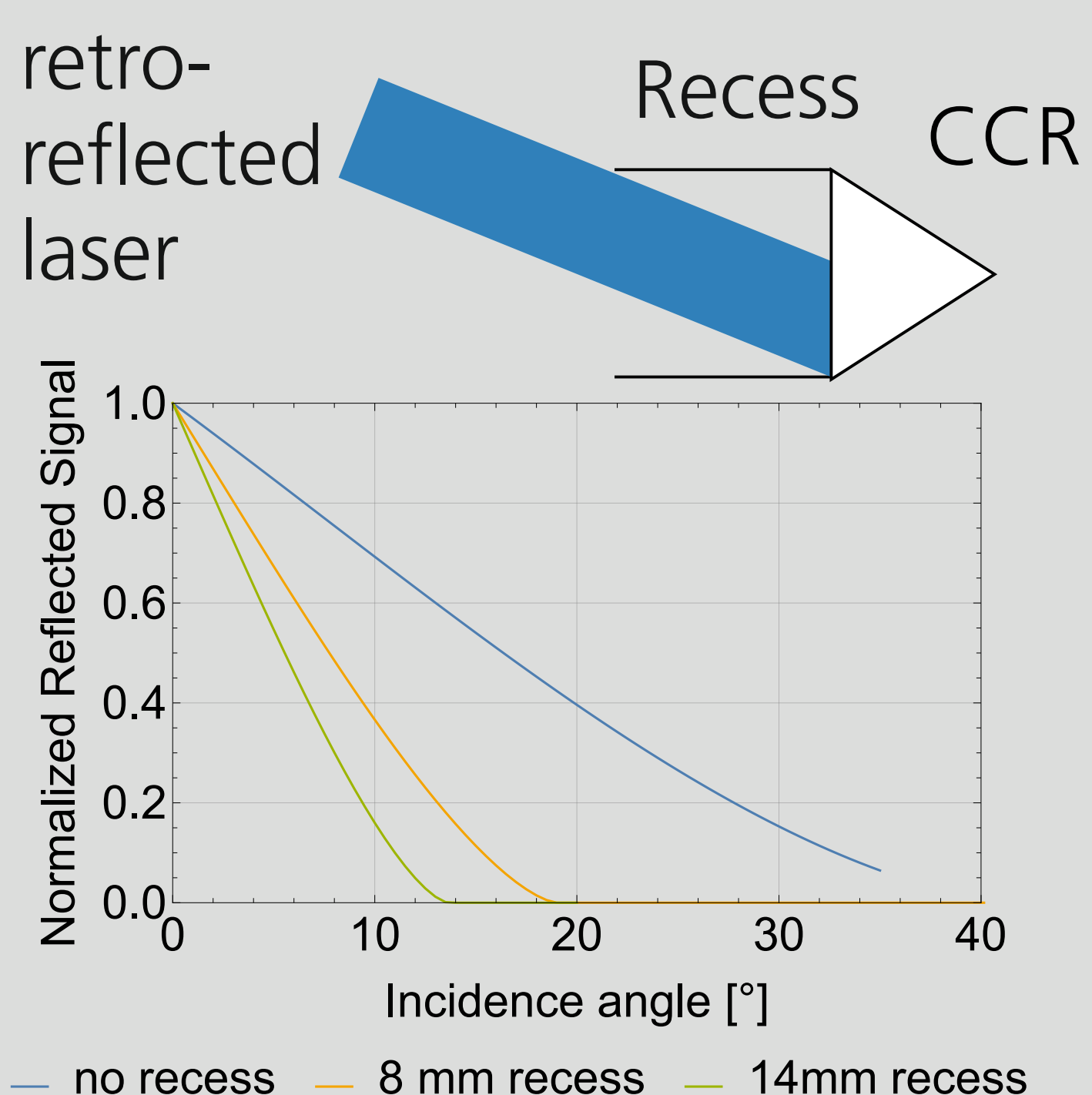
## Challenge of accurate pointing

The attitude control system (ACS) needs to be accurate by  $\pm 1^\circ$  (remaining pointing accuracy comes from active beam steering)



## Attitude verification via SLR

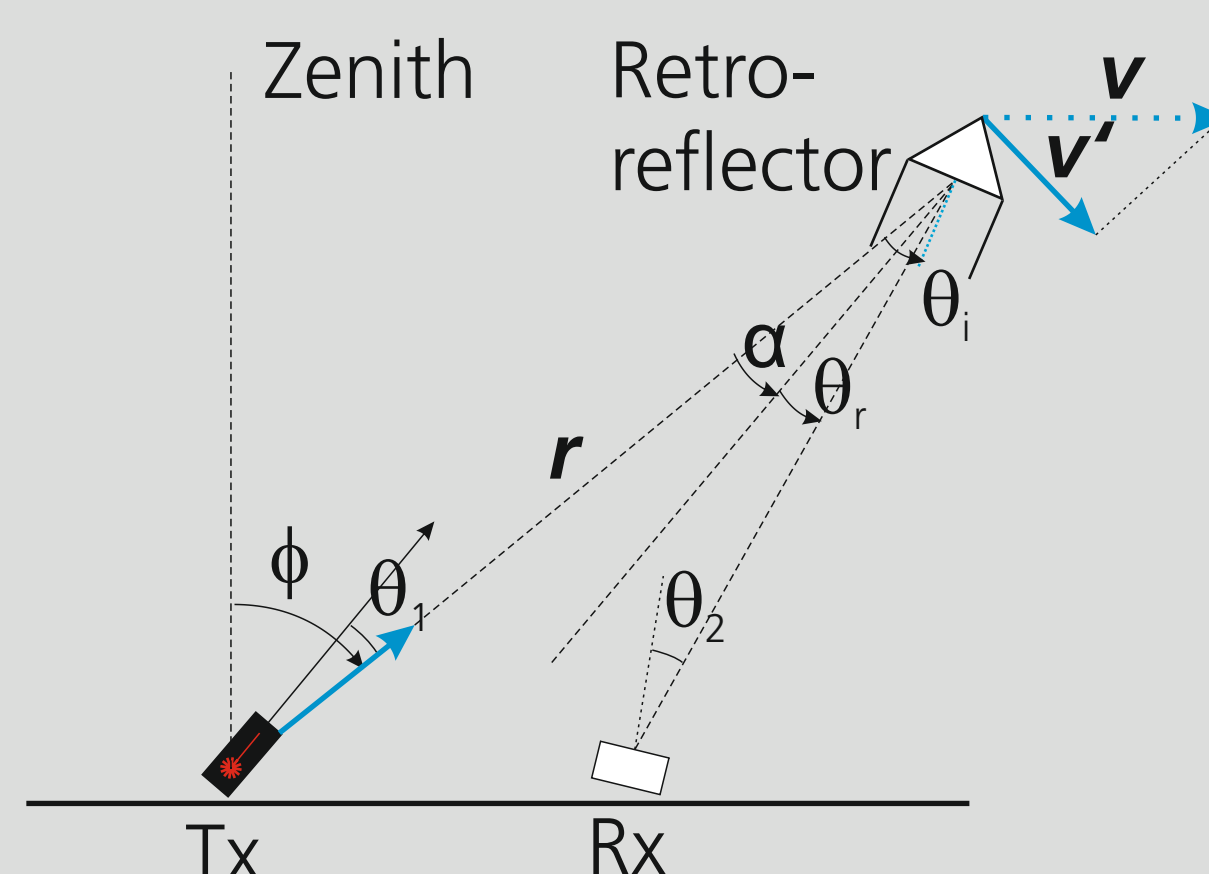
Goal: Independent verification of the functioning of the ACS via SLR to  $\pm 1^\circ$



A retroreflector with a 5mm circular front face needs a 14 mm recess to obtain a field of view FWHM of  $5^\circ$

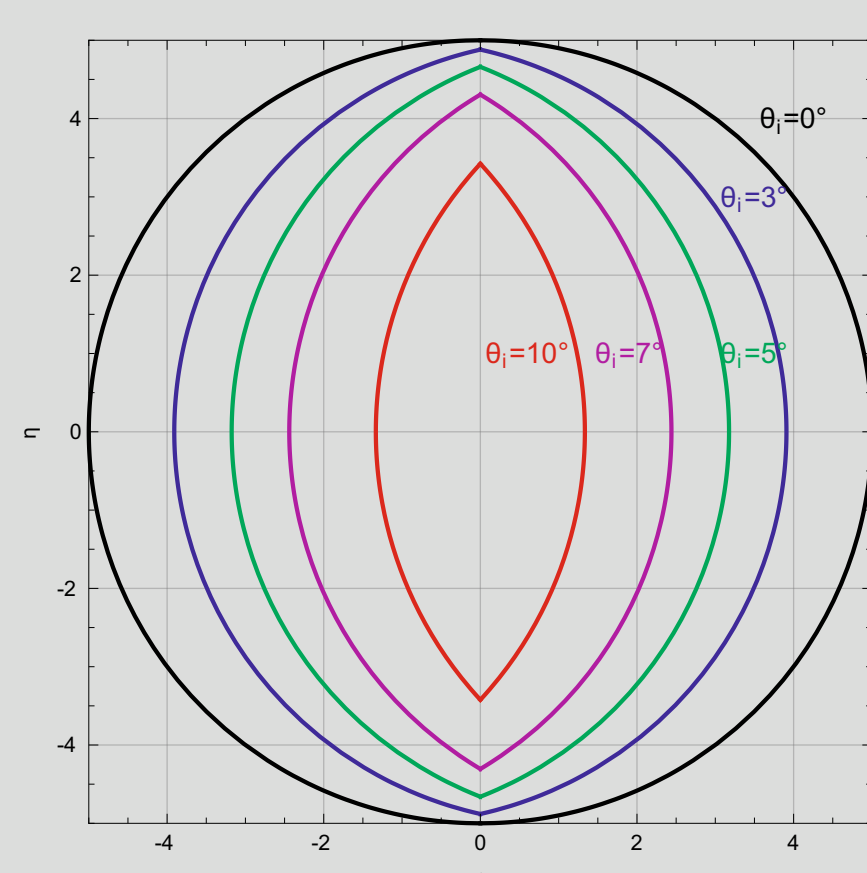
## Design of the recessed cube corner retroreflector (CCR)

### SLR Geometry



Emitter (Tx) and receiver (Rx) are typically collocated, apparent receiver angle  $\theta_r$  due to velocity aberration  $\alpha$

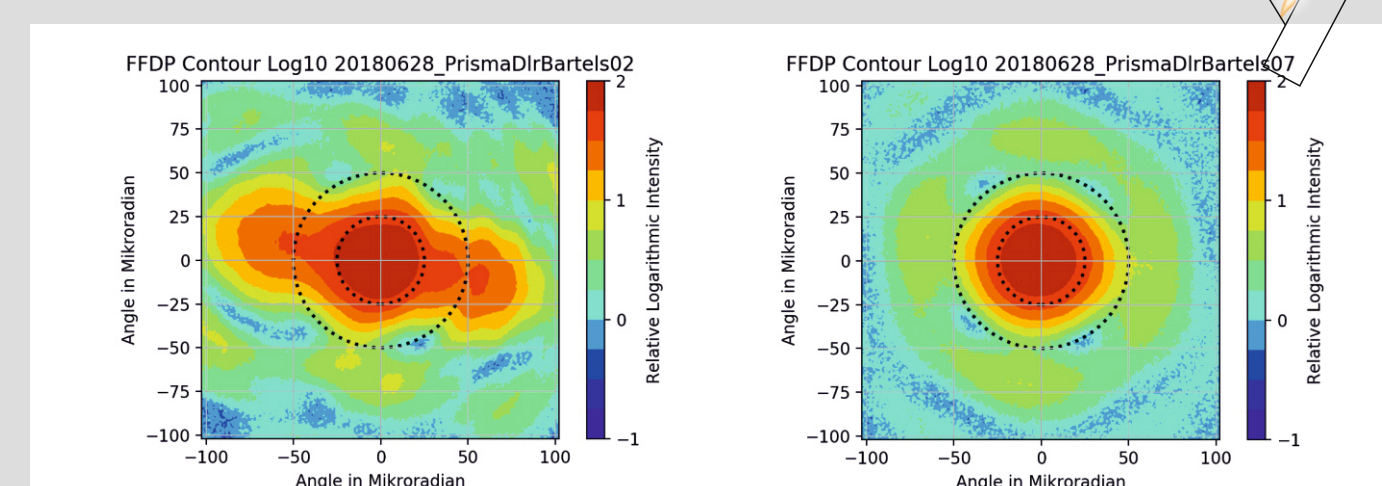
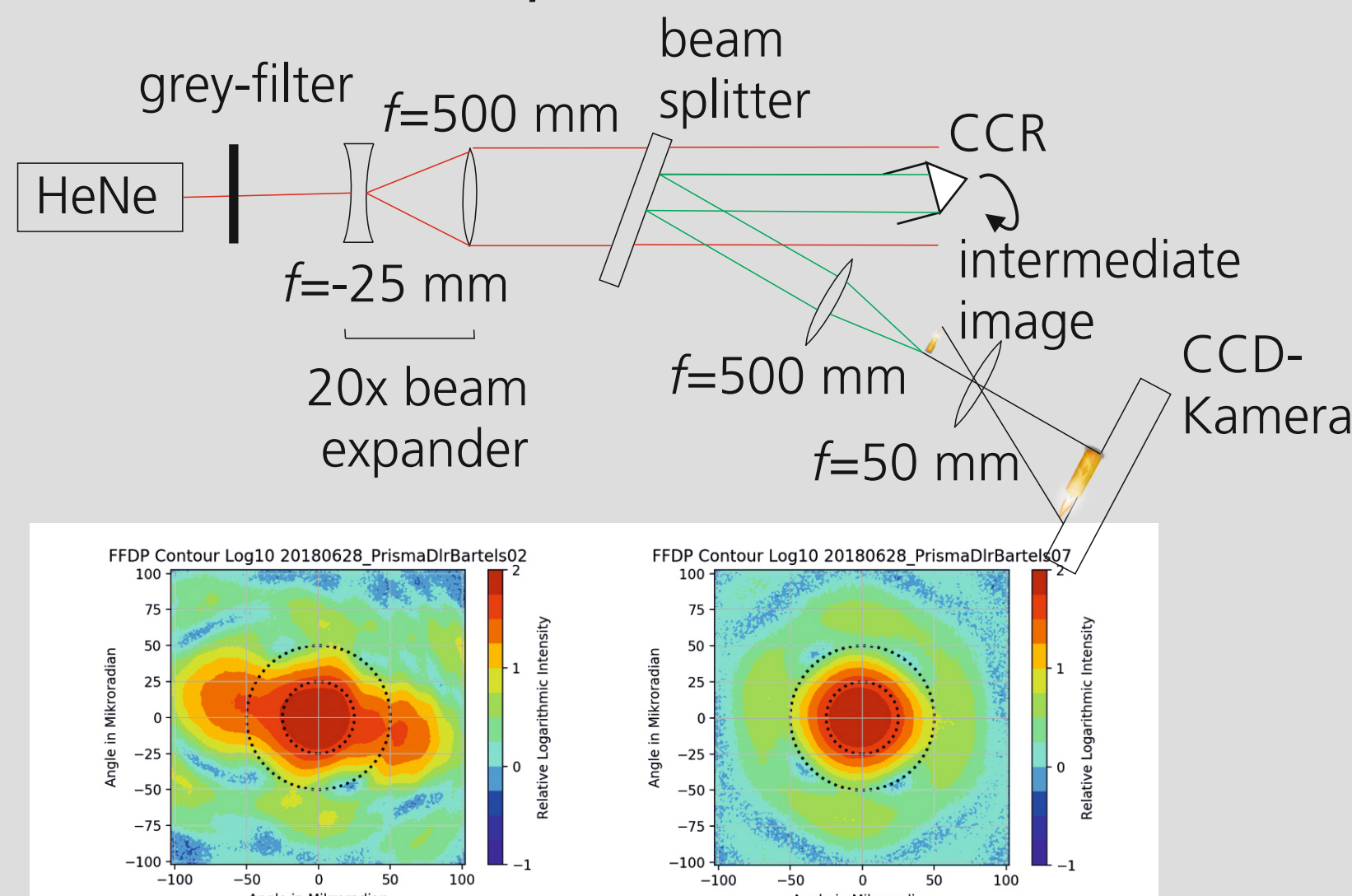
### Calculation of the field of view



Reflectivity of the CCR is proportional to the effective area  $A_{\text{eff}}$

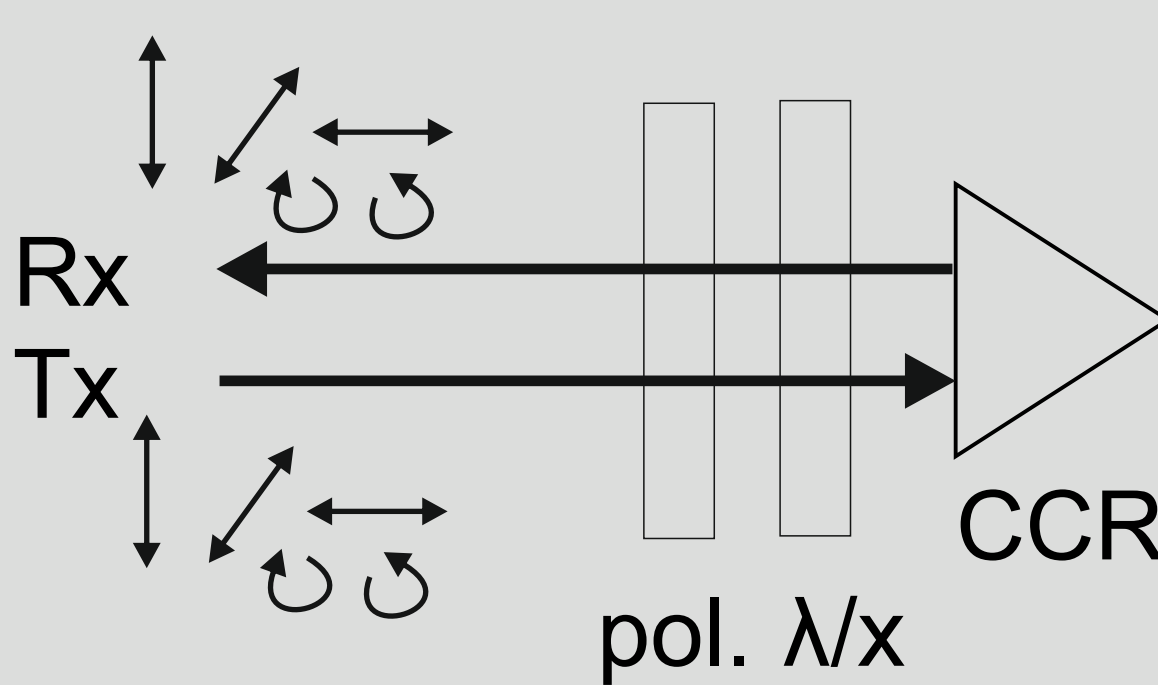
## Manufacturing and testing

### 1. Measurement of the far-field diffraction pattern (FFDP)



### Future plans:

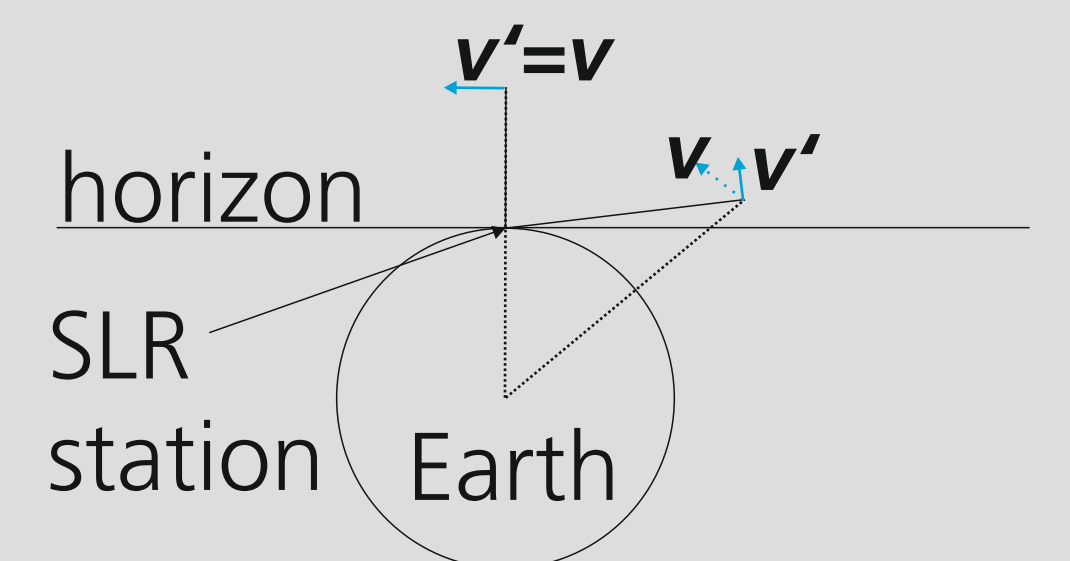
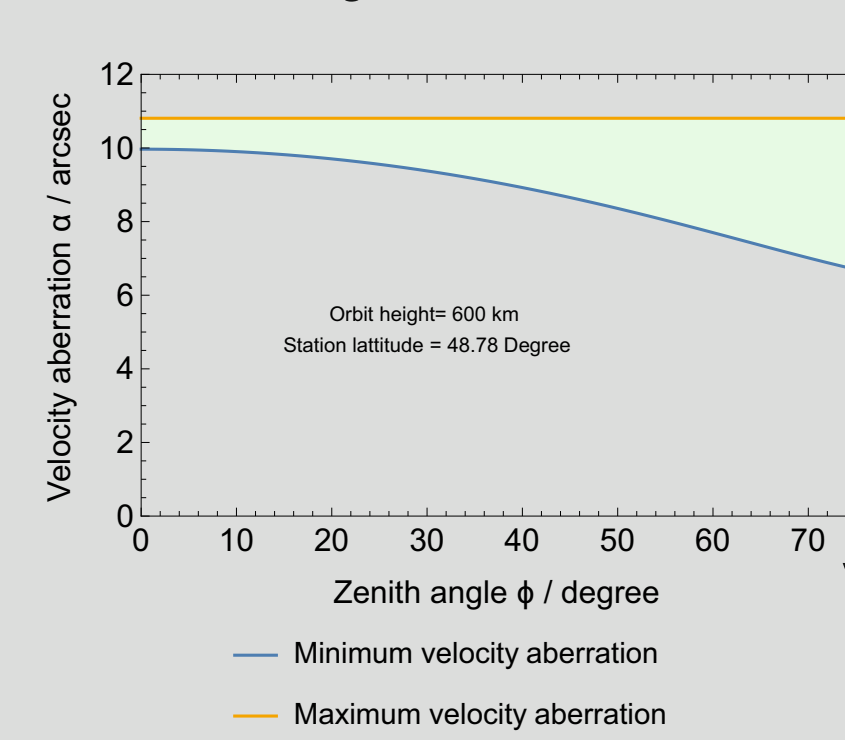
#### 1. Smart retroreflectors + arrays



	Retardance	Diattenuation
CCR1	$0^\circ$	0
CCR2	$45^\circ$	0.5
CCRn		

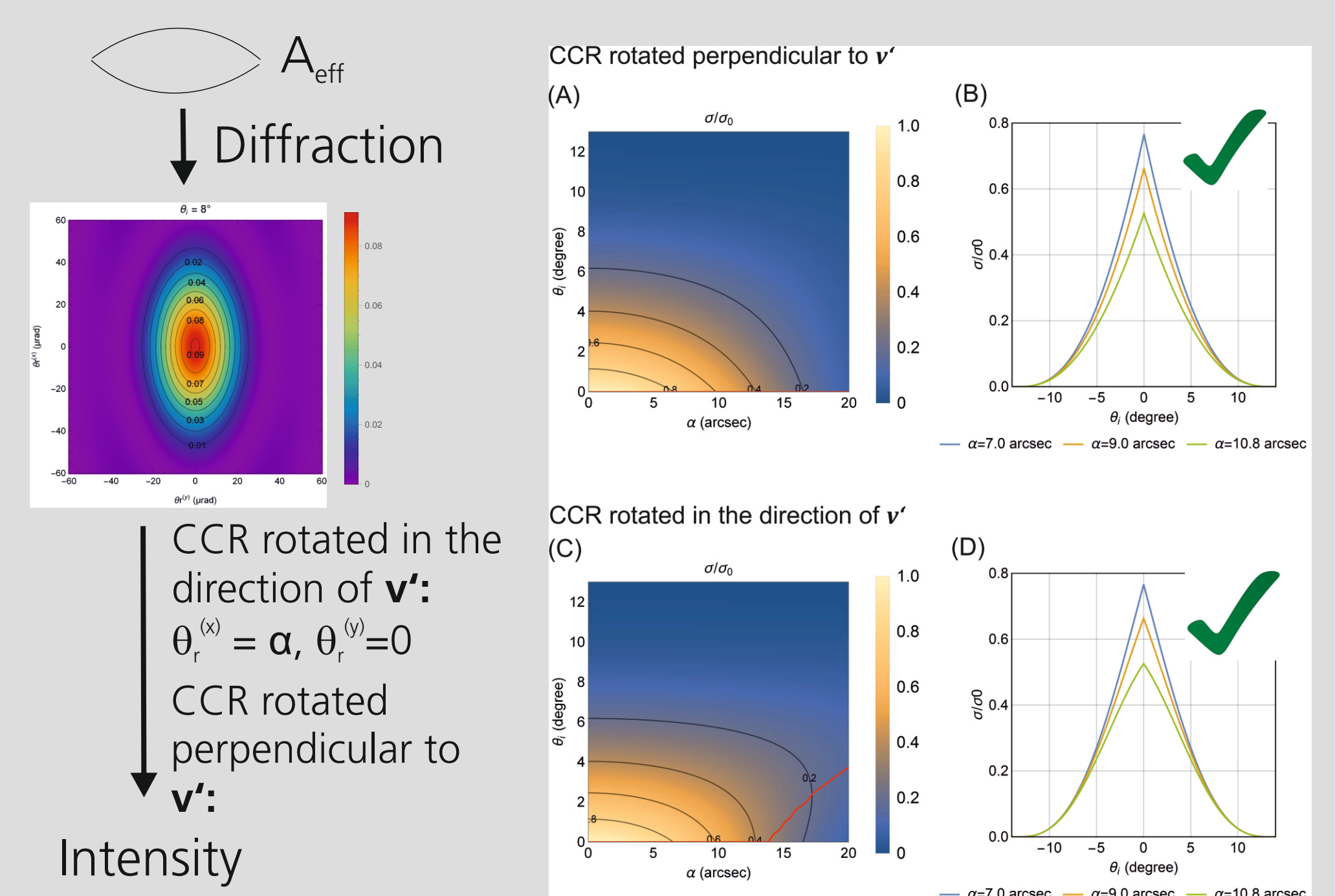
Retroreflectors with polarimetric ID (could be passive or active as modulated retroreflector)

### Velocity aberration

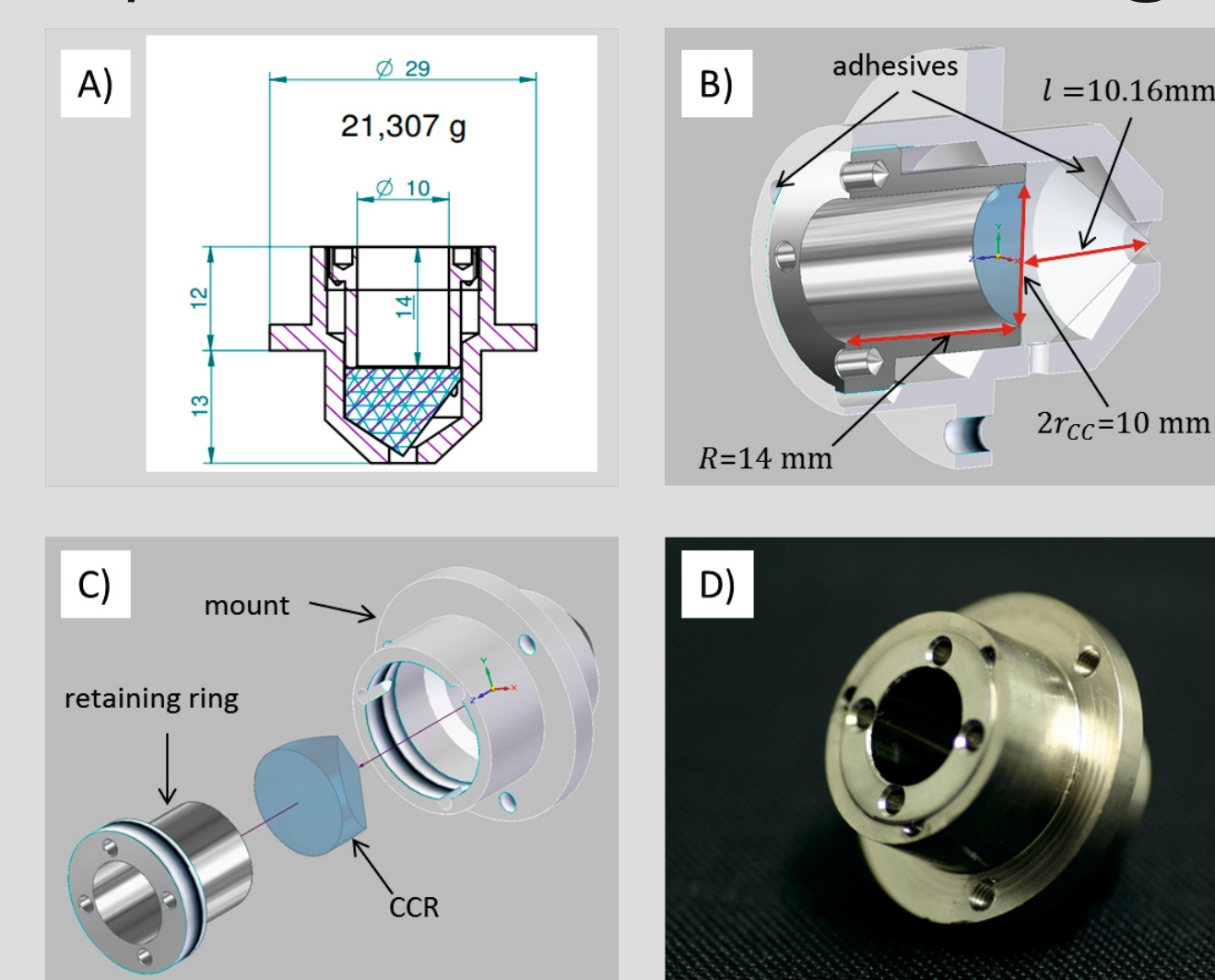


Velocity aberration  $\alpha$  is between 7 and 10 arcsec

Does the SLR signal peak when the retro-reflector points towards the SLR station?



### 2. CAD design, manufacturing, glueing, response of FFDP to heating, vibration



### 2. SLR of the Cubel retroreflector

Correlate the SLR signal to the orientation of the rotating satellite

