

2017 ILRS Technical Workshop Riga, Latvia

Session 2: How do we evaluate our current performance?

Session Chairs:

Erricos C. Pavlis,
Toshimichi Otsubo,
Horst Mueller,
Cinzia Luceri

Questions raised for this session:

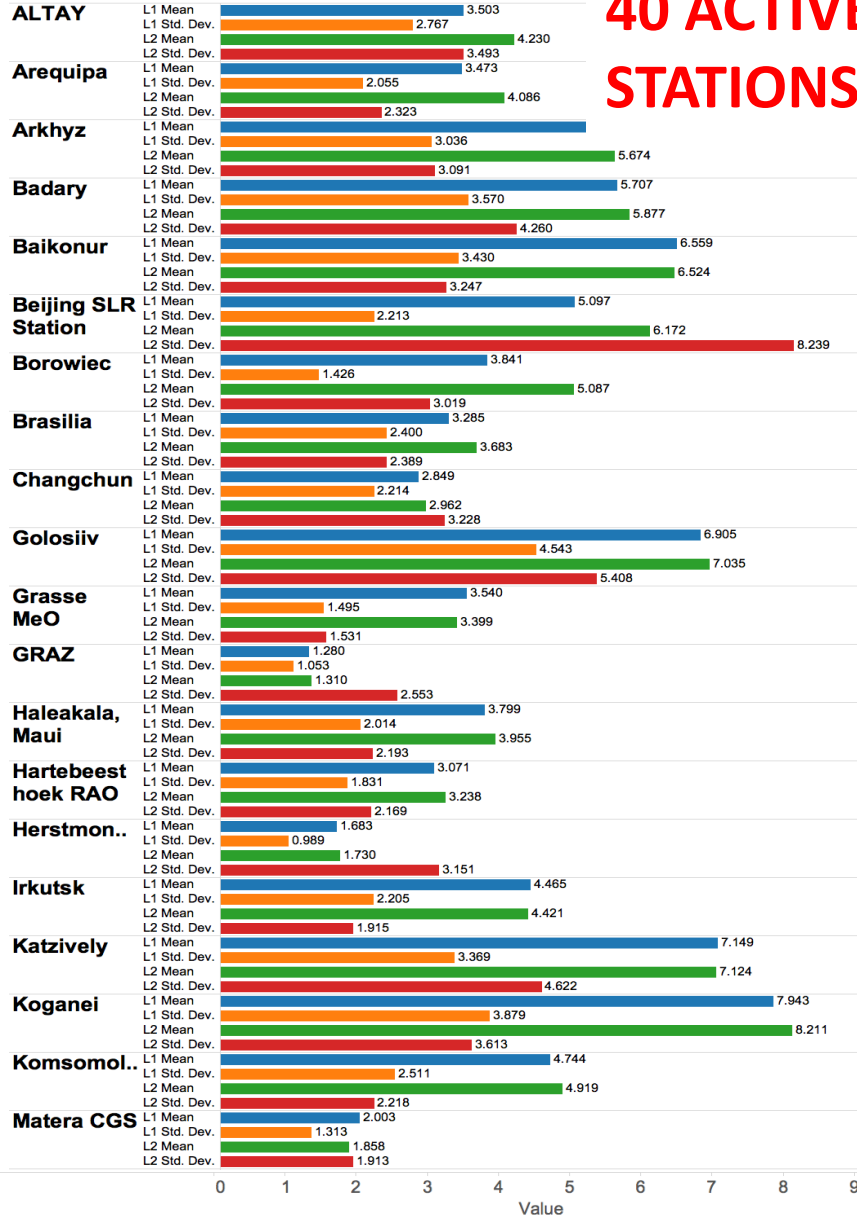
- What is the status of the station systematics pilot project and the other evaluation tools used by the AC's?
- What tools do we have at the stations? Are they the right ones? Can we define diagnostic procedures?
- Reporting procedures (feedback)
- How does the performance of the new technology stations compare with the legacy stations?
- What are the observed differences? What should the differences be?
- Do differences in data screening procedures have any impact on the consistency of our data products?

Matera CGS

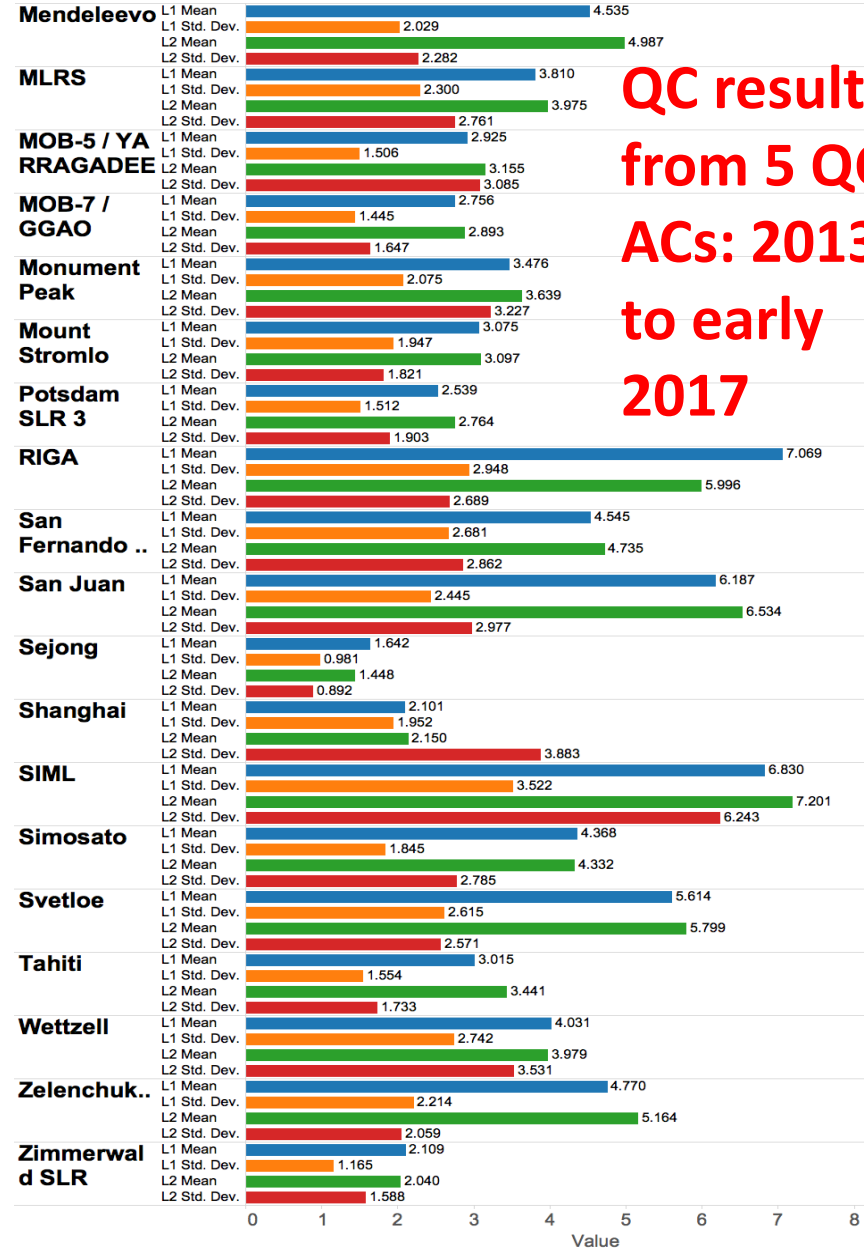


Mean Standard Deviation of LAGEOS residuals
Std. Dev. of above Mean Std. Dev. of LAGEOS residuals
Mean Standard Deviation of LAGEOS-2 residuals
Std. Dev. of above Mean Std. Dev. of LAGEOS-2 residuals

GLTN 40 2013-2017
 Location



40 ACTIVE ILRS STATIONS

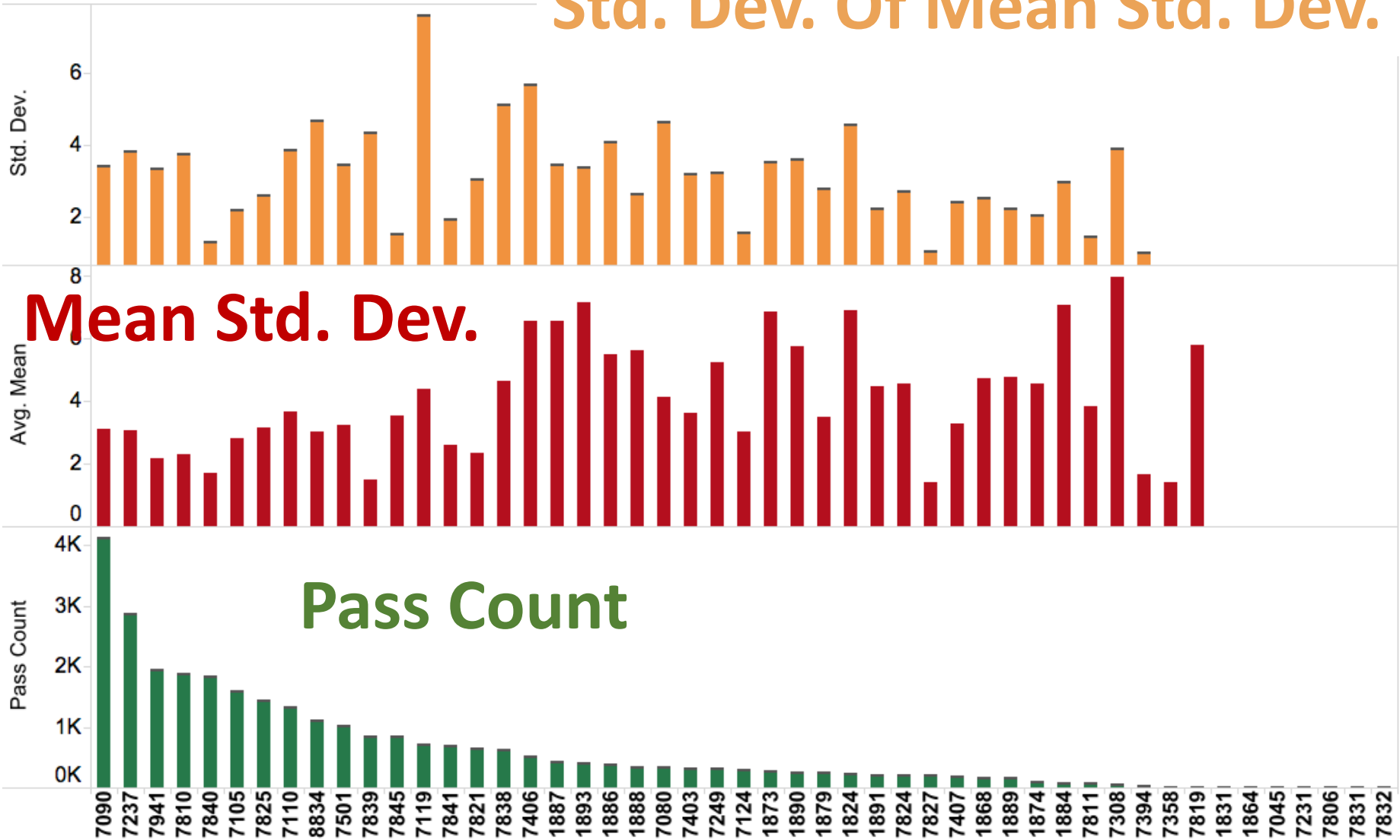


QC results from 5 QC ACs: 2013 to early 2017

ILRS Stations' Performance 2013-2017

GLTN 2013-2017

Std. Dev. Of Mean Std. Dev.



2017 ILRS Technical Workshop

Riga, Latvia

Program for Day 2 (October 3)

Session 2: How do we evaluate our current performance?

Session Chairs: Erricos C. Pavlis, Toshimichi Otsubo, Horst Mueller, Cinzia Luceri

Time	Topic	Presenter/Remarks
Session 2A	Overview & Ongoing ASC Efforts	(50 minutes)
09:00	Introduction	E. C. Pavlis
09:15	The ILRS ASC Pilot Project on systematic error estimation	Cinzia Luceri
09:35	BKG's Contribution to the ILRS Pilot Project on Systematic Errors	Daniel Koenig
09:50	Break	(30 minutes)
Session 2B	State of the Network and Sources of Errors	(100 minutes)
10:20	Evaluation of the present SLR tracking stations	Horst Mueller
10:35	SLR error sources in the kHz repetition era: How should we improve the range measurement and the products?	Toshimichi Otsubo
10:55	Variability of LAGEOS normal point sampling: causes and mitigation	José Rodríguez
11:15	Effect of pulse length, rise time, signal strength, and type of detection system on the range correction for LAGEOS-2	David Arnold
11:35	Discussion	(25 minutes)
12:00	Lunch	(60 minutes)

12:00	Lunch	<i>(60 minutes)</i>
Session 2C	Hardware & External Tools to Improve Performance	<i>(60 minutes)</i>
13:00	From Time Transfer by Laser Ranging to space geodetic products	Alexandre Belli
13:20	Transitioning the NASA SLR network of seven stations from the Time Interval Mode to the Event Timing Mode	Thomas Varghese
13:40	Точка presentation	<i>S. Martynov</i>
14:00	Break	<i>(30 minutes)</i>
Session 2D	ILRS Tools for Network Support	<i>(130 minutes)</i>
14:30	JCET Tools for the Assessment of the ILRS Stations' Performance	Erricos C. Pavlis
14:50	GOVUS – a new on-line tool for the evaluation of SLR observations to GPS, GLONASS, Galileo, BeiDou and QZSS	Radosław Zajdel
15:10	The ILRS Rapid Service Mail a tool to inform stations quickly about potential problem	T. Otsubo
15:30	Discussion/Closing Remarks	<i>(30 minutes)</i>
16:00	Networks & Engineering Standing Committee	<i>(120 minutes)</i>
18:00	Missions Standing Committee	<i>(120 minutes)</i>