



Networks & Engineering SC Meeting

16:00-17:00 Tuesday 3rd October (Room 240)

ILRS Technical Workshop, Riga

NESC Agenda

- Networks and Engineering SC Forum
- Summary of updates to the ILRS Site Log
 - presentation by Randy Ricklefs
- SLR tracking of decommissioned ILRS targets
- **Discussion:** Priorities for the NESC

NESC Forum



- The NESC forum has **73** members

- Other stats:

| | |
|-------------------|--------------|
| Total Posts: | 62 |
| Total Topics: | 24 |
| Total Categories: | 4 |
| Total page views: | 153459 (???) |

- Activity on the forum was very quiet in recent months. It increased in the run up to the Workshop and after email reminders.

NESC Forum



- How can NESC members increase activity?
 - Invite your colleagues to sign up
 - Think of a new topic of interest and post it
 - Reply to posts
 - **What else??**

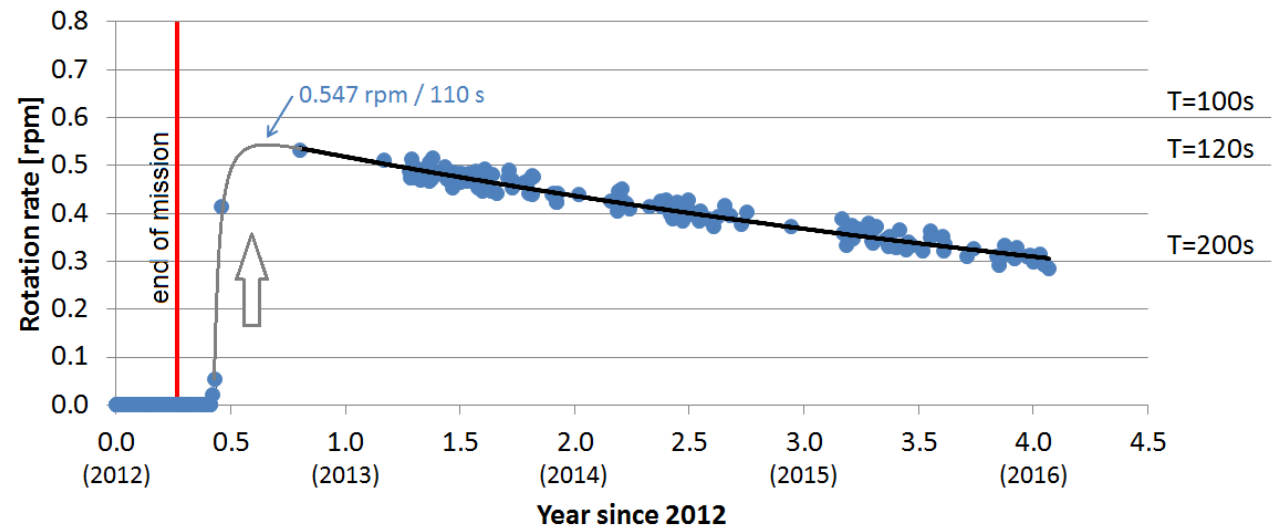
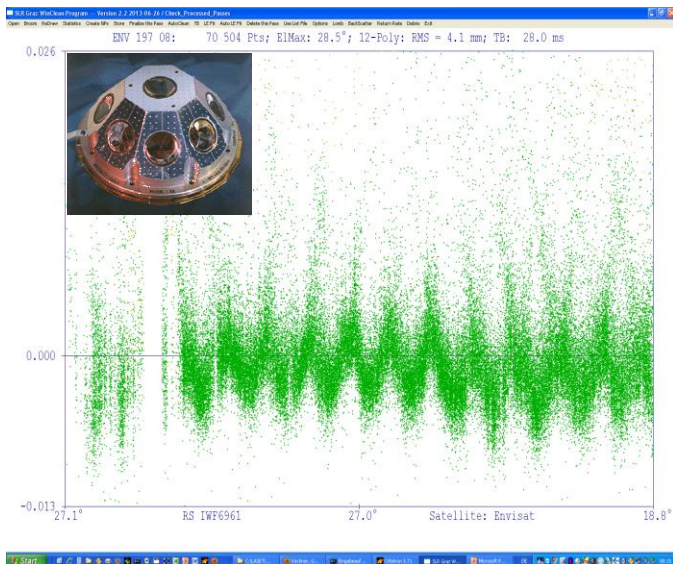
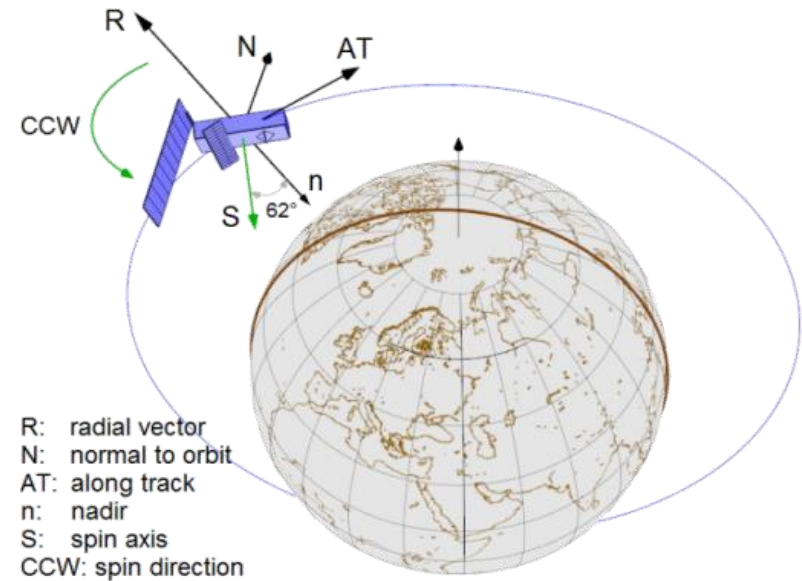
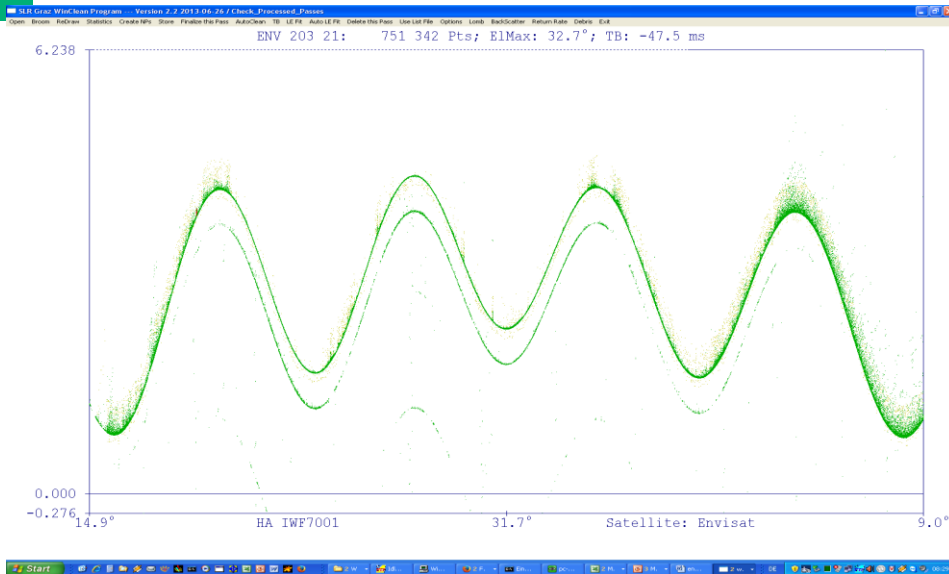
NEESC Forum



- Activity should breed more activity and interest, so try to post something. This could be:
 - An update about your station (especially if you’ve an upgrade underway)
 - A link to a website/report/paper of interest
 - A question to the community
- A new “Photograph Wall” section has just been added

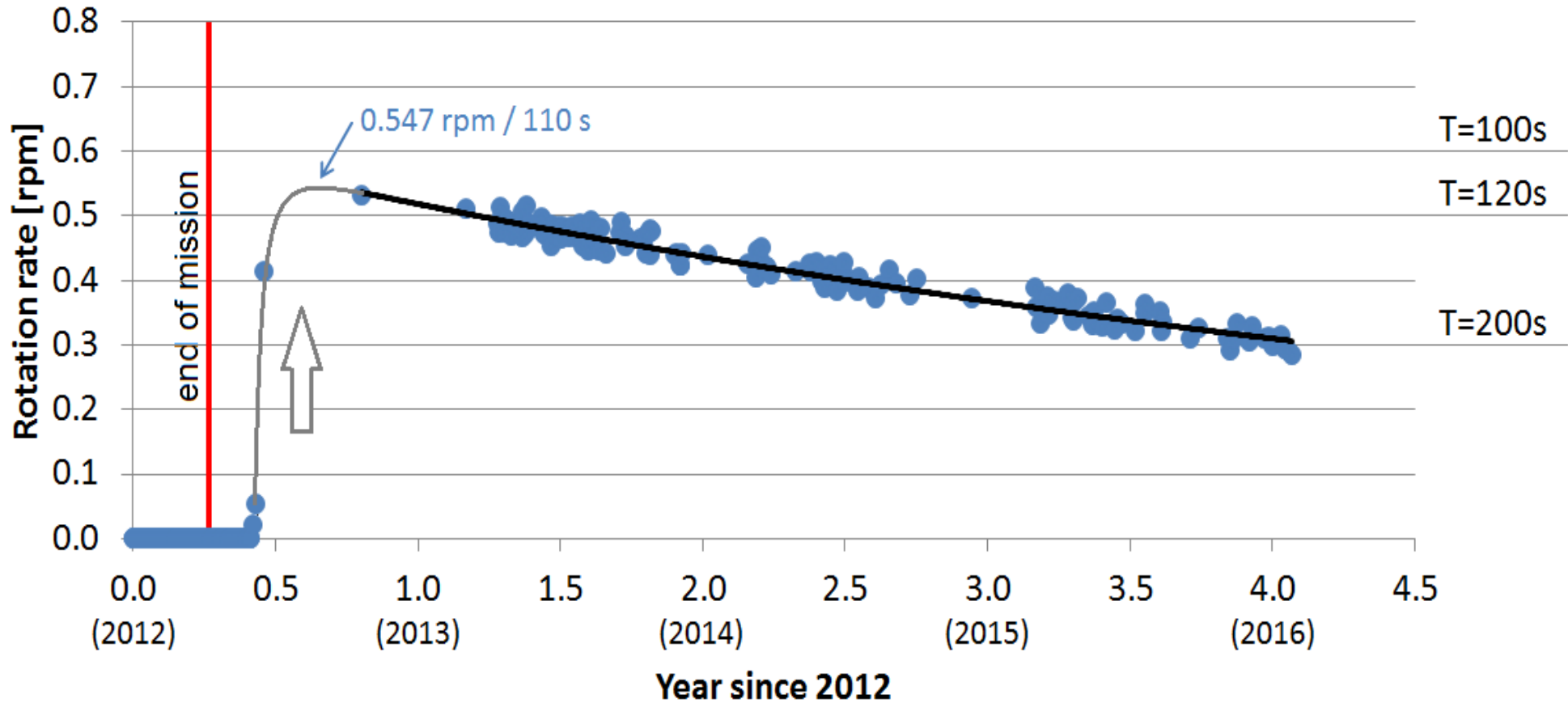
- Summary of updates to the ILRS Site Log
 - presentation by Randy Ricklefs

2 kHz Laser Ranging to ENVISAT: Spin: > 200 s; few meters



- end of mission: April 8, 2012
- spin up period: June 3 - Aug. 10, 2012 (~2 months), max spin rate = 0.547 rpm (T=110 s)
- exponential loss of rotational energy

ENVISAT: developed unexpected spin after end of mission



- end of mission: April 8, 2012
- spin up period: June 3 - Aug. 10, 2012 (~2 months), max spin rate = 0.547 rpm (T=110 s)
- exponential loss of rotational energy

SLR tracking of decommissioned ILRS targets

- Usually, SLR tracking stops immediately; BUT
- For **selected targets**, we should continue SLR tracking on a **very reduced** priority level, to determine attitude, and the begin of attitude motions => this was completely missed e.g. with ENVISAT
- It offers valuable additional contributions of SLR:
 - Science: e.g. insight into effects of solar radiation pressure
 - POD: Inclusion of attitude / attitude motion => better OD
- This additional workload is minimal:
 - A few passes per week or so would be completely sufficient ...
 - A few participating SLR stations also would be sufficient ...

NESC Priorities

- What should be the top priorities and areas of focus for the Networks and Engineering SC?
- Suggestions:
 - **Systematic Bias.** Building on previous surveys by email and the outcomes from [Workshop Session 3: Accuracy and scheduling](#), could the NESC compile all known potential sources of systematic range error?
 - **New technique development.** Stations are involved in time-transfer, space debris, laser communications etc.
 - **Site surveying.** Is this being carried out by all stations as well as could be?
 - **Greater network collaboration and cooperation.** Is the NESC Forum the best way to support the network? or is there something else we should do?