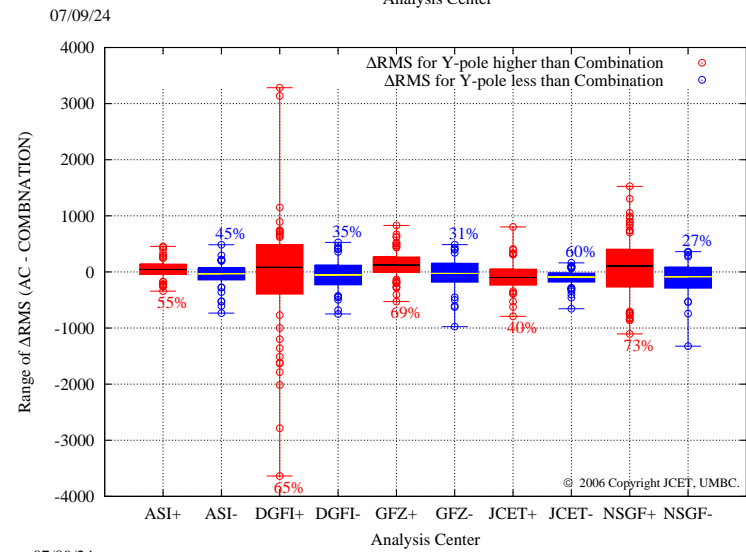
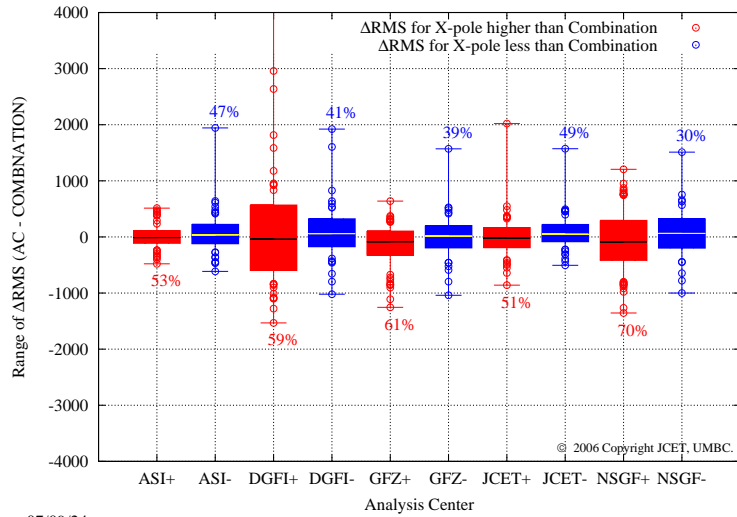
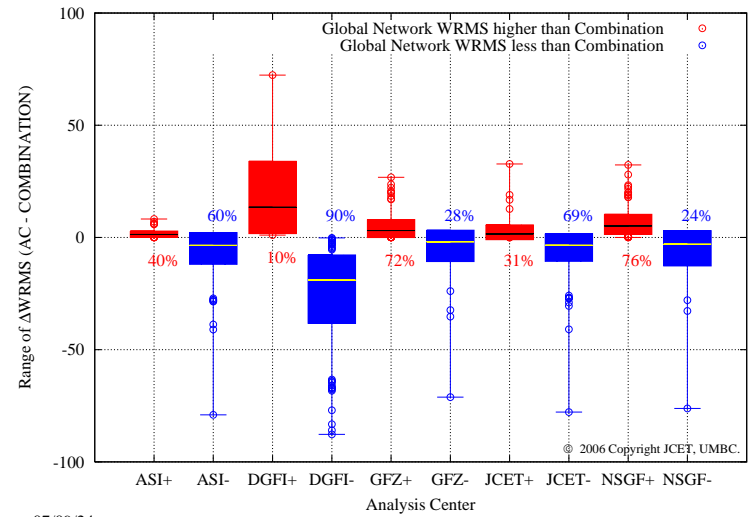
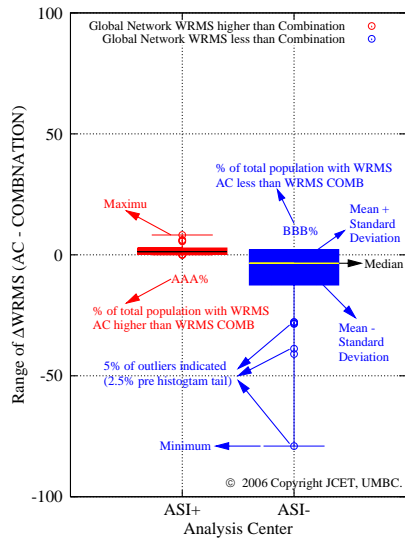


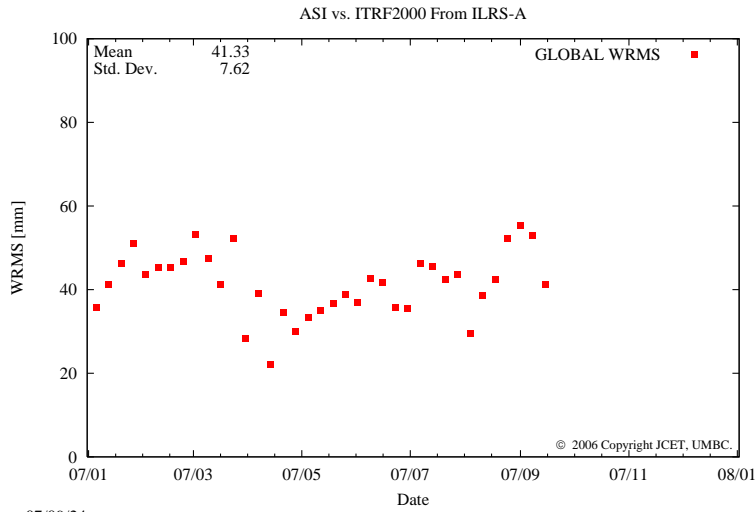
ASI REPORT
FOR WEEK 070915
FROM ILRSA



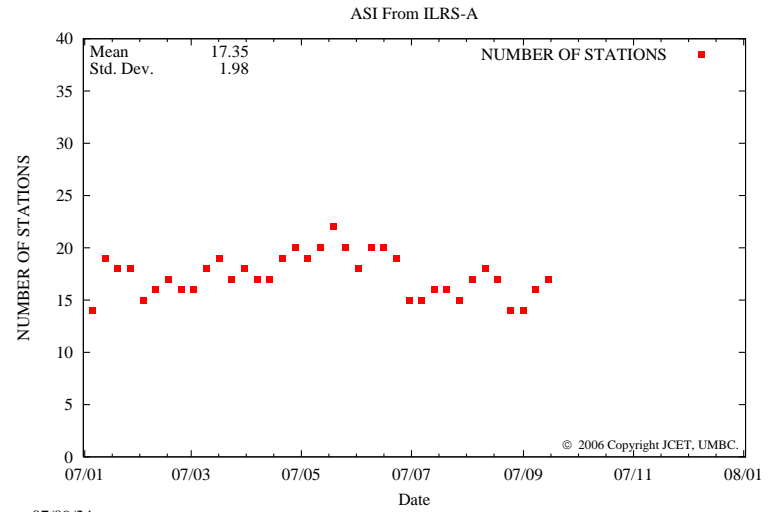
07/09/24

07/09/24

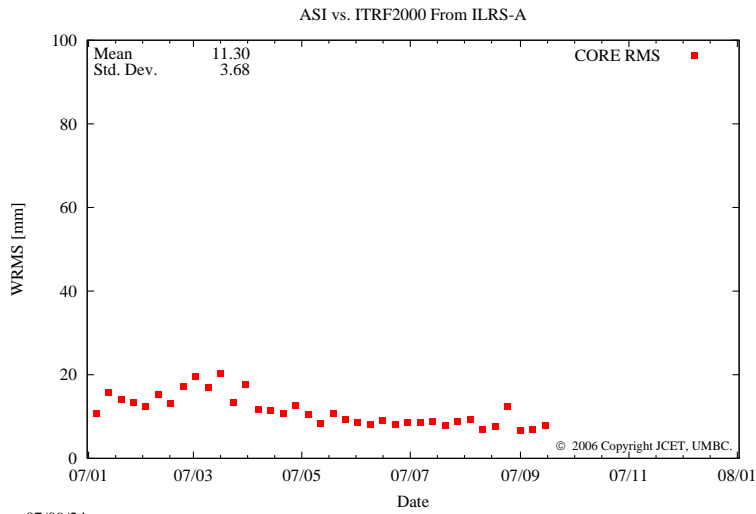
CONTRIBUTION STATISTICS FOR ALL ACs



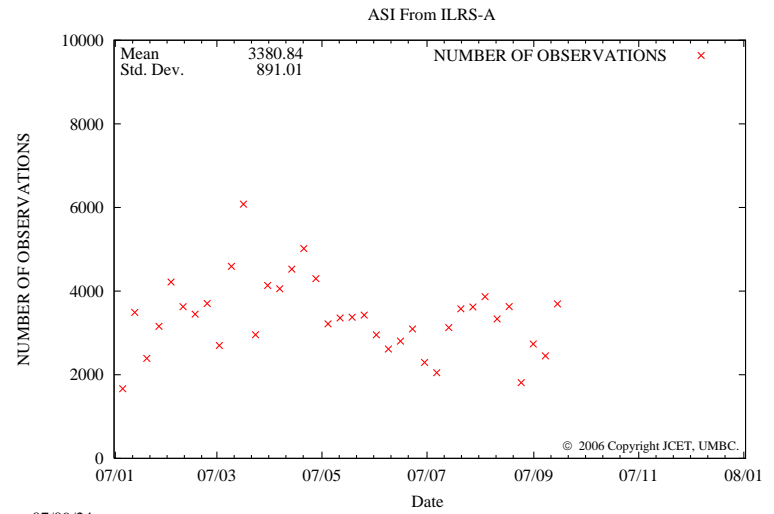
07/09/24



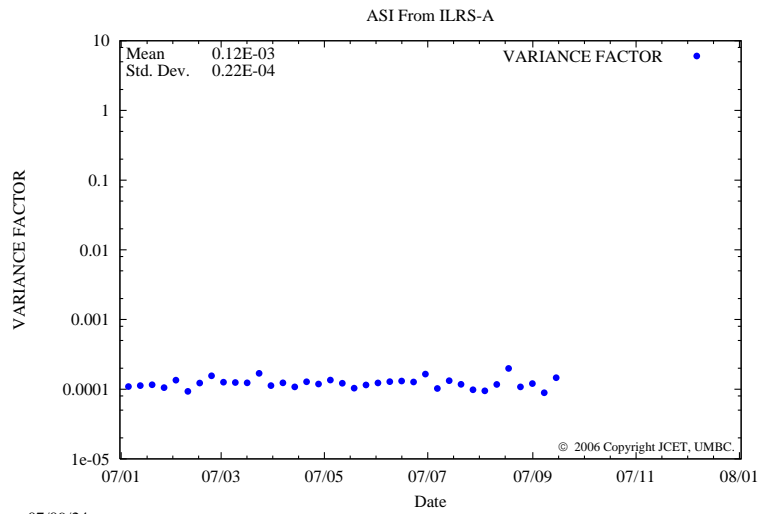
07/09/24



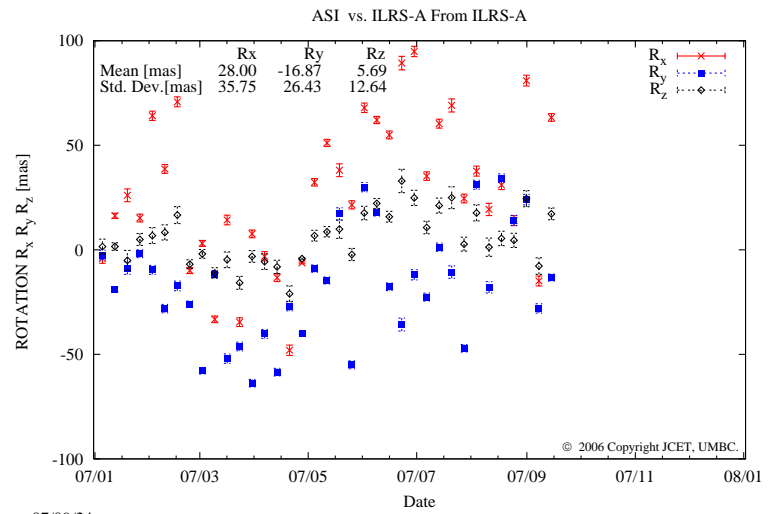
07/09/24



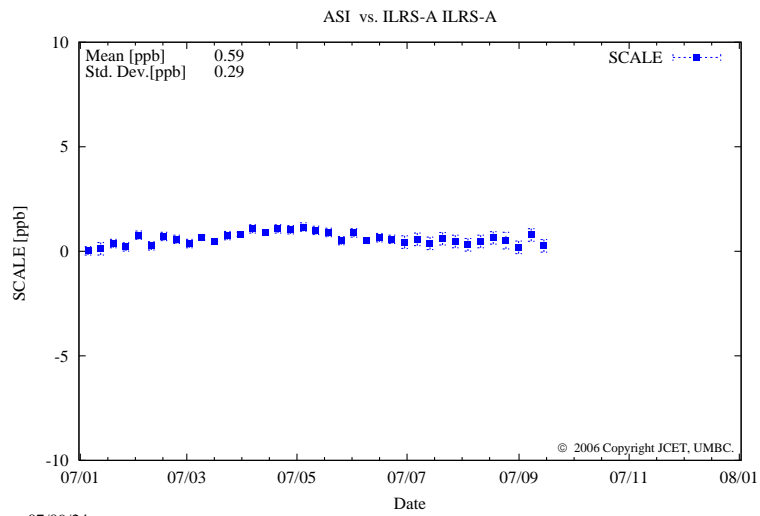
07/09/24



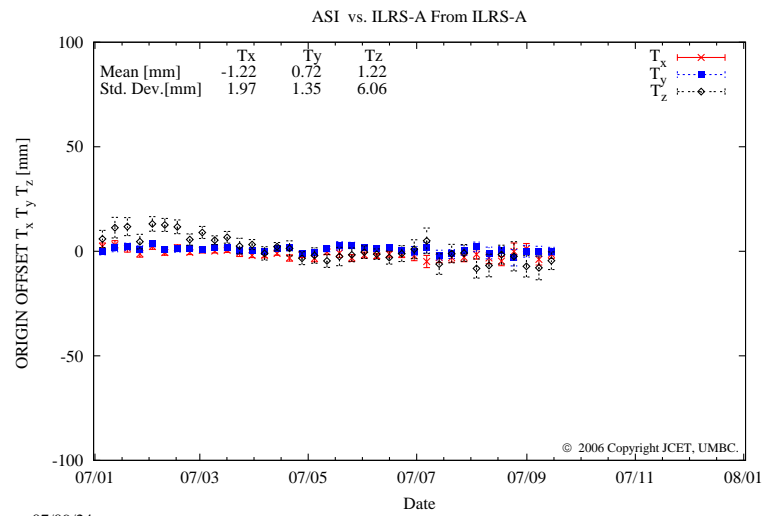
07/09/24



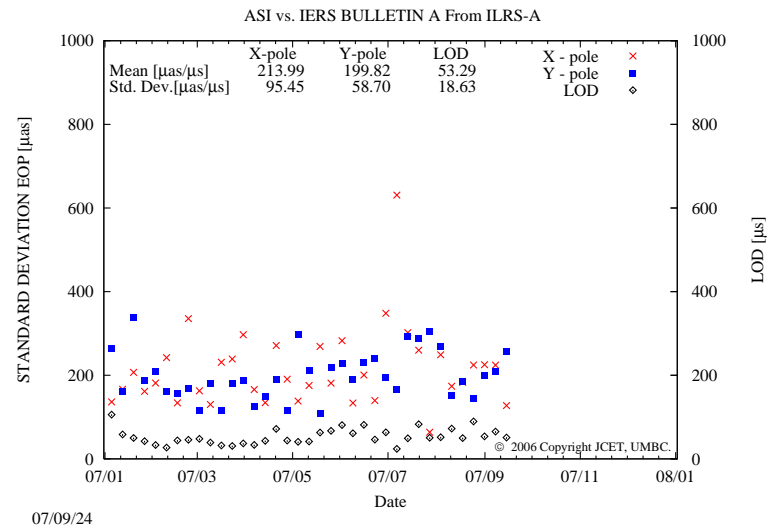
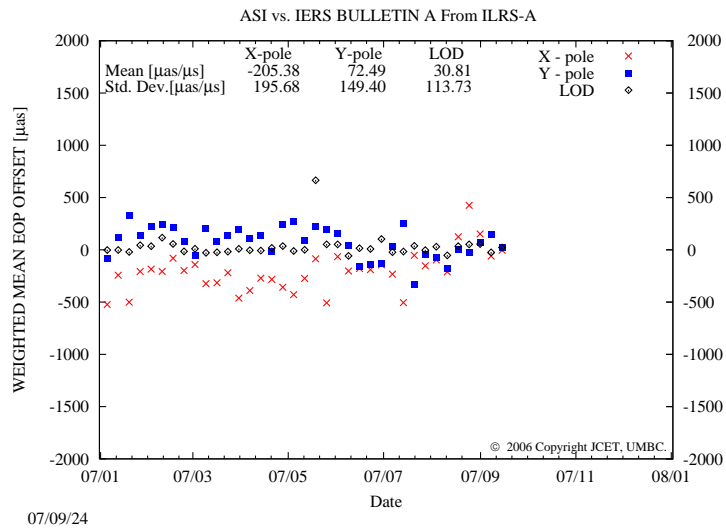
07/09/24



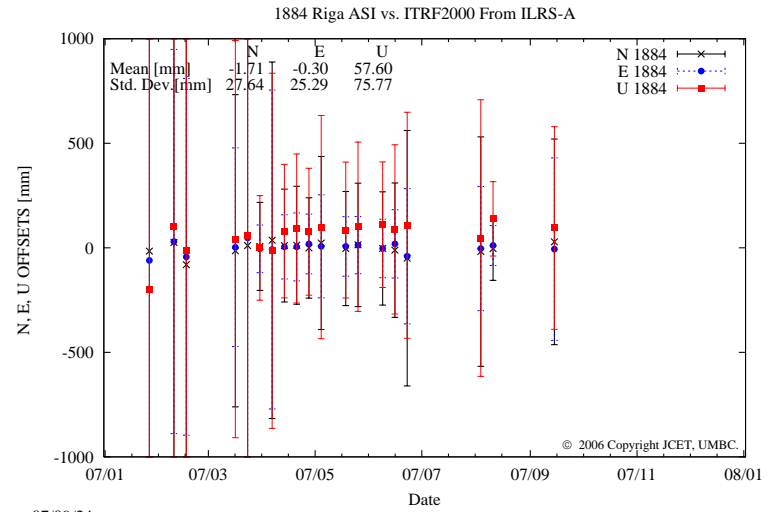
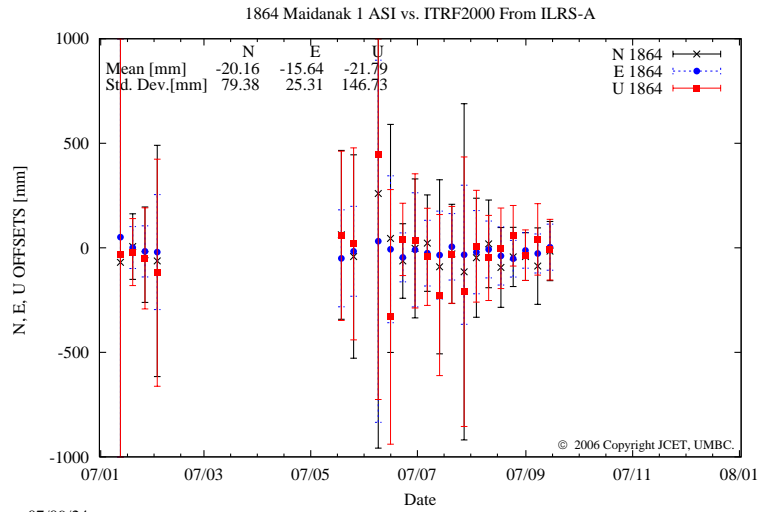
07/09/24



07/09/24

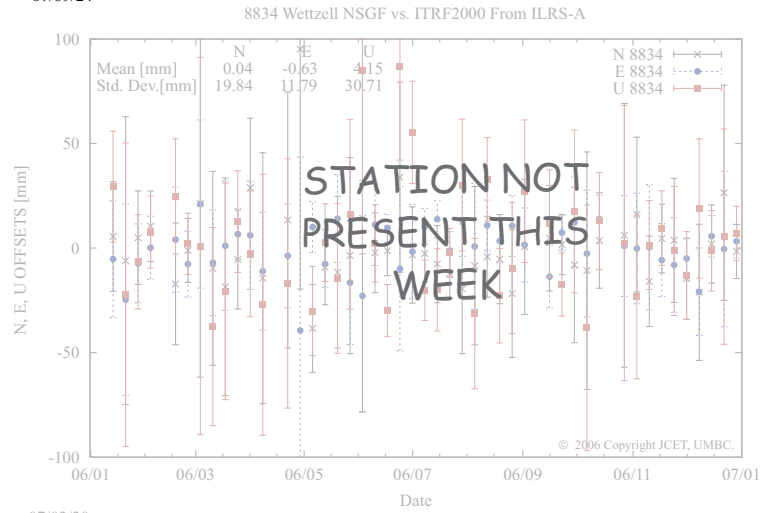
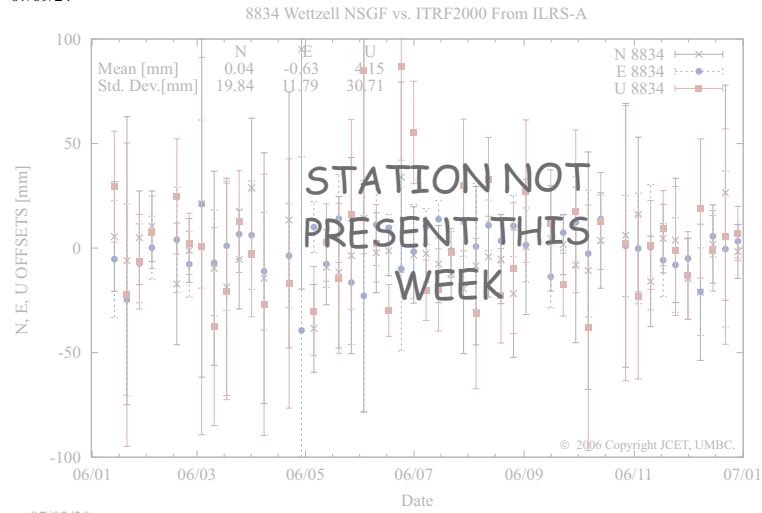


Global WRMS [mm]				Core Site WRMS [mm]		
41.23				7.97		
TRANSFORMATION PARAMETERS WITH RESPECT ITRF2000						
Tx [mm]	Ty [mm]	Tz [mm]	Scale [ppb]	Rx [mas]	Ry [mas]	Rz [mas]
-3.8 ± 6.0	0.1 ± 4.9	-22.7 ± 10.5	1.39 ± 1.6	57.92 ± 0.19	-12.26 ± 0.21	16.52 ± 0.21
TRANSFORMATION PARAMETERS WITH RESPECT TO THE COMBINED SOLUTION						
Tx [mm]	Ty [mm]	Tz [mm]	Scale [ppb]	Rx [mas]	Ry [mas]	Rz [mas]
-1.5 ± 1.9	-0.0 ± 1.9	-4.5 ± 4.2	0.26 ± 0.3	63.31 ± 1.82	-13.25 ± 1.69	17.20 ± 2.81
EOP residuals with respect to USNO "finals.daily" after ITRF2000 transformation [μ as, μ s]						
W-MEAN						
X pole [μ as]		Y pole [μ as]			LOD [μ s]	
-4.5		24.3			21.8	
STD [\pm as]						
X pole [μ as]		Y pole [μ as]			LOD [μ s]	
127.5		257.2			51.1	



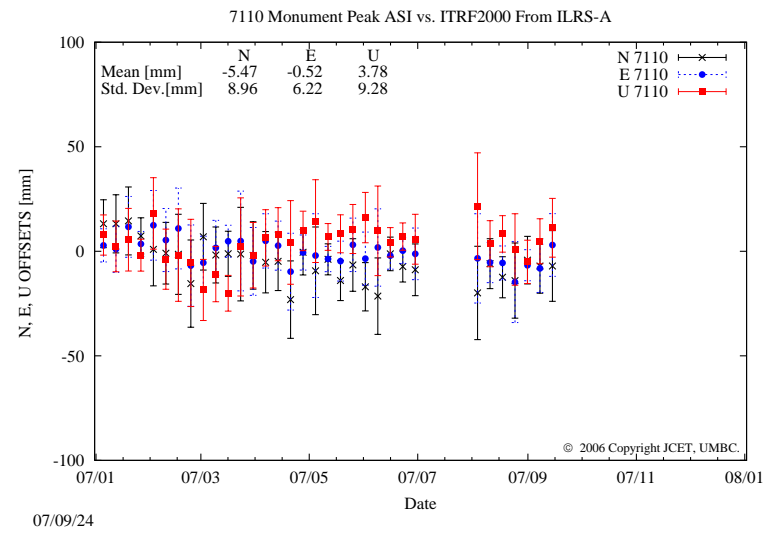
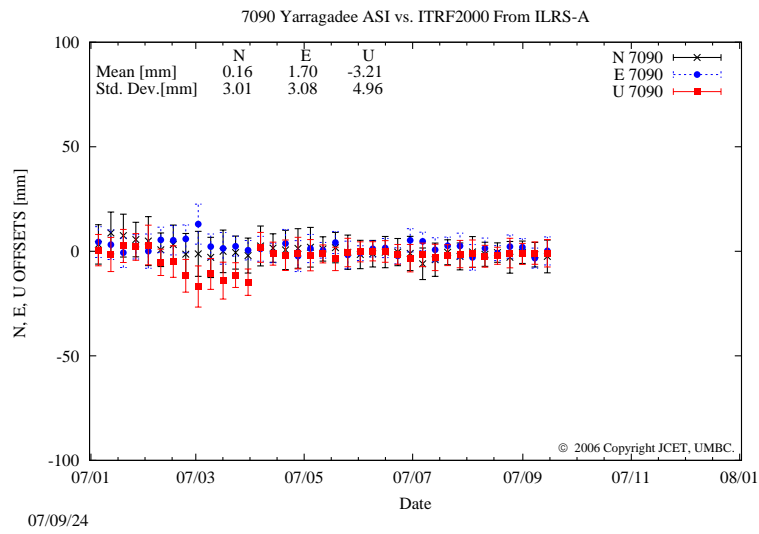
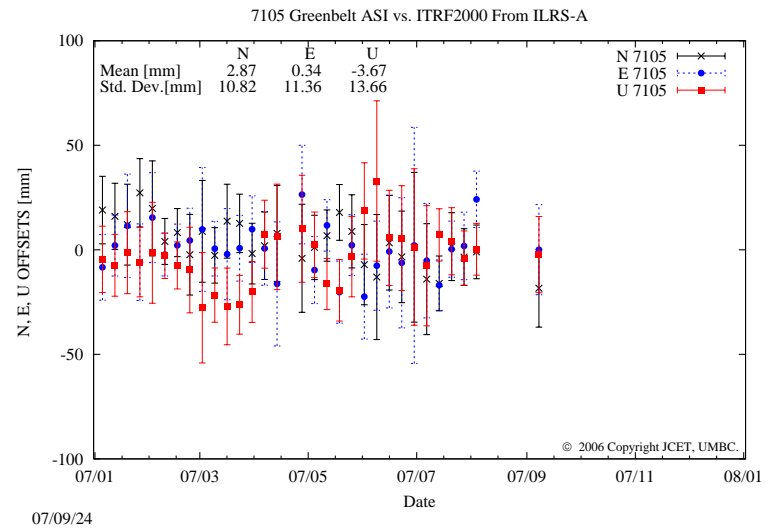
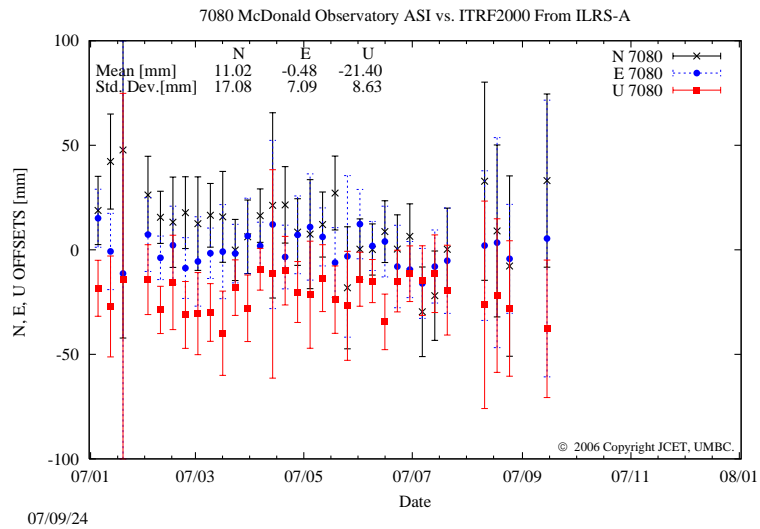
07/09/24

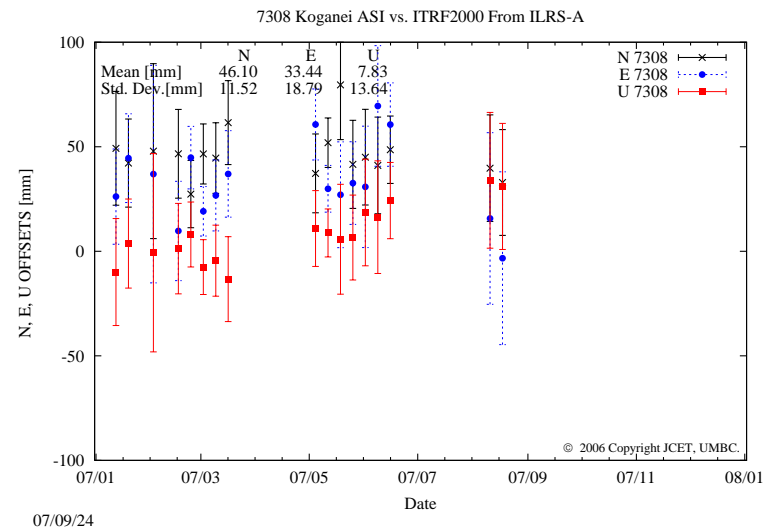
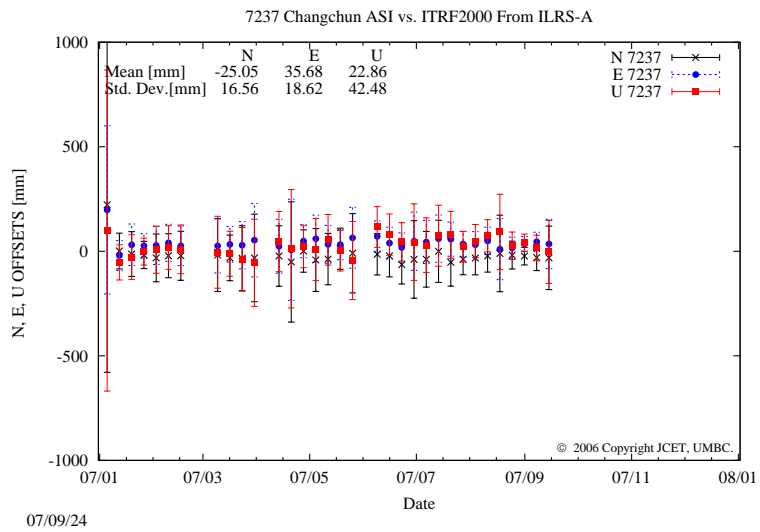
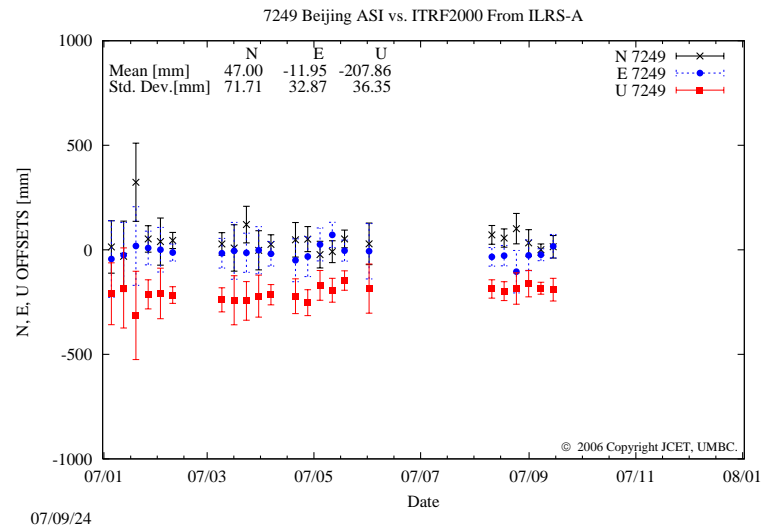
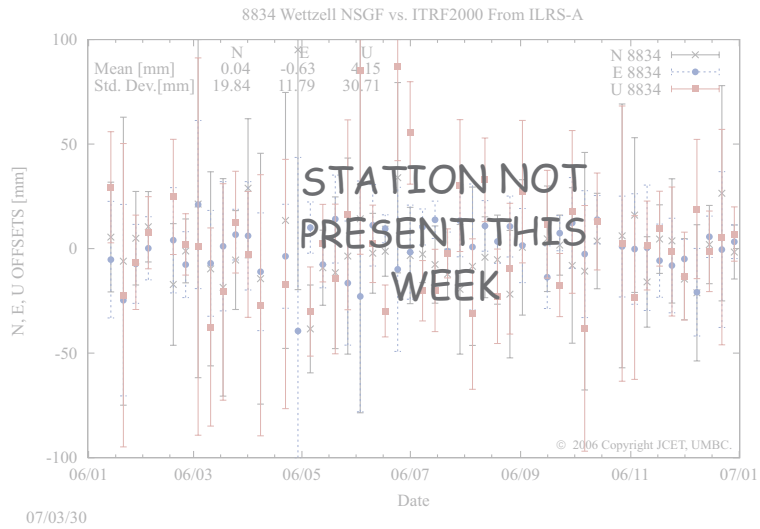
07/09/24

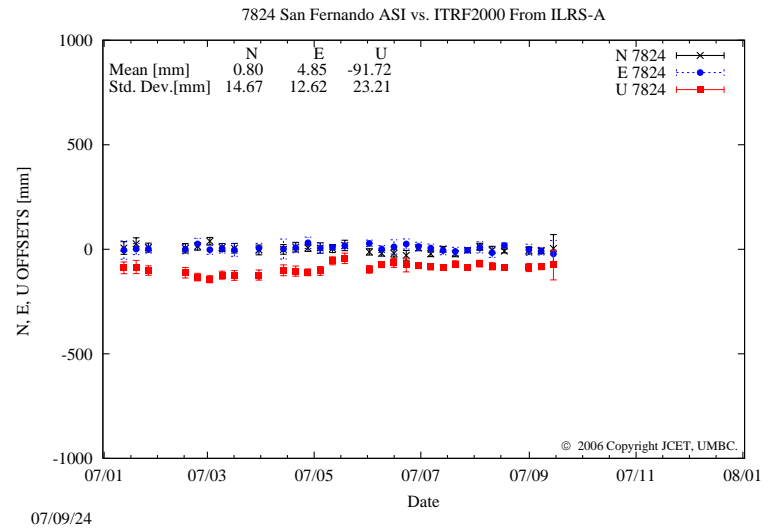
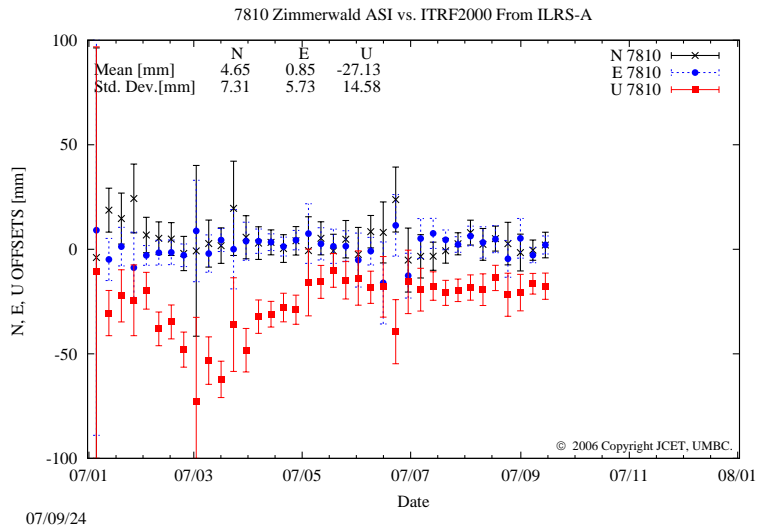
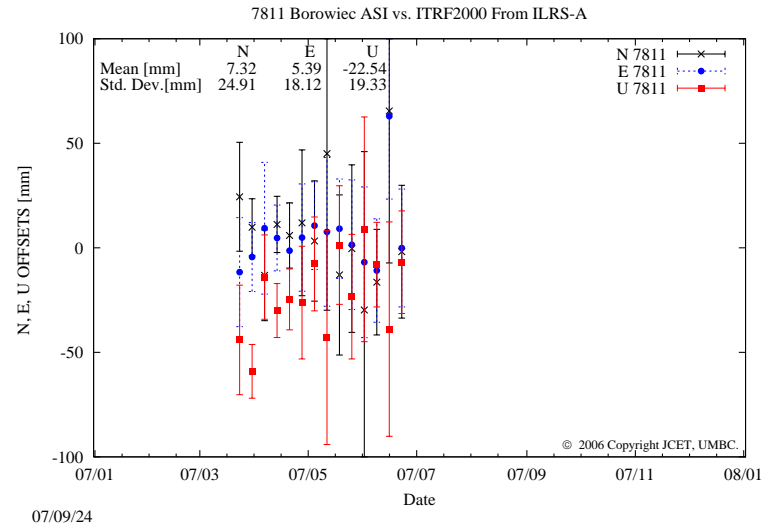
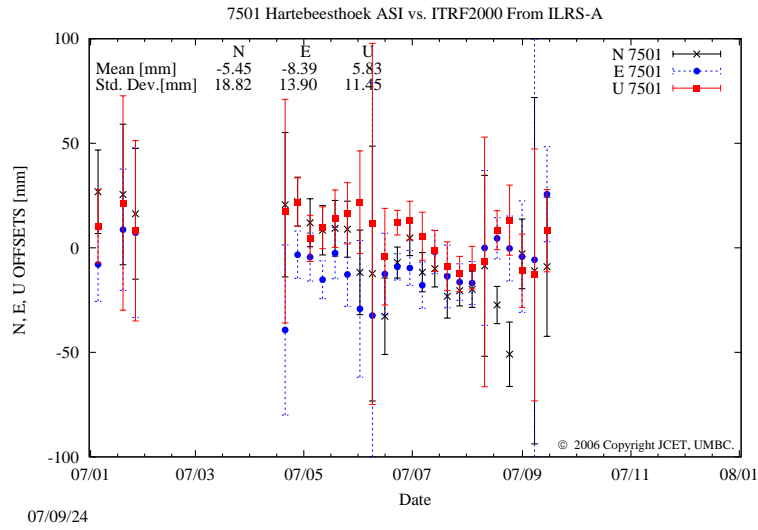


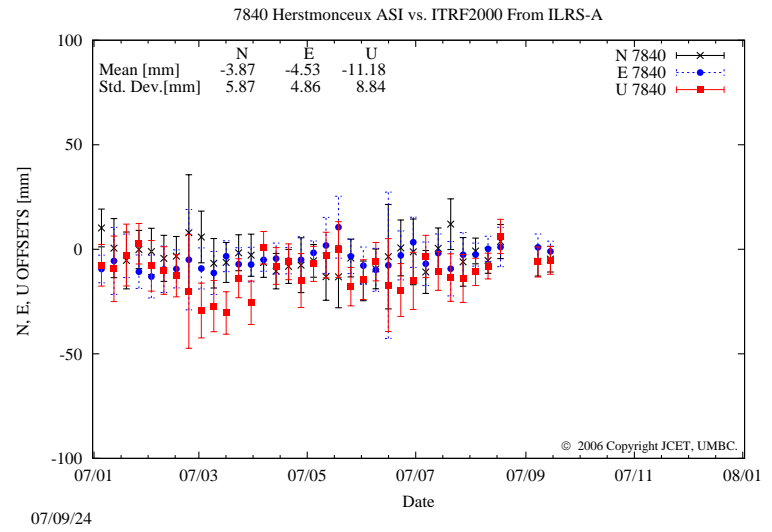
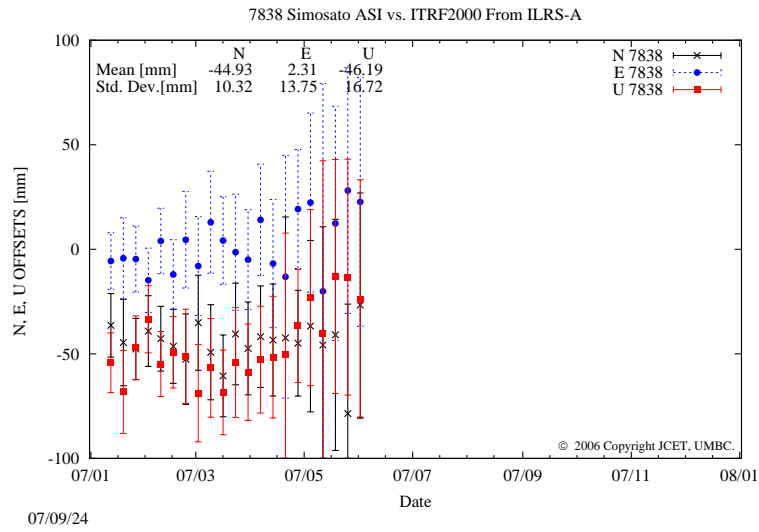
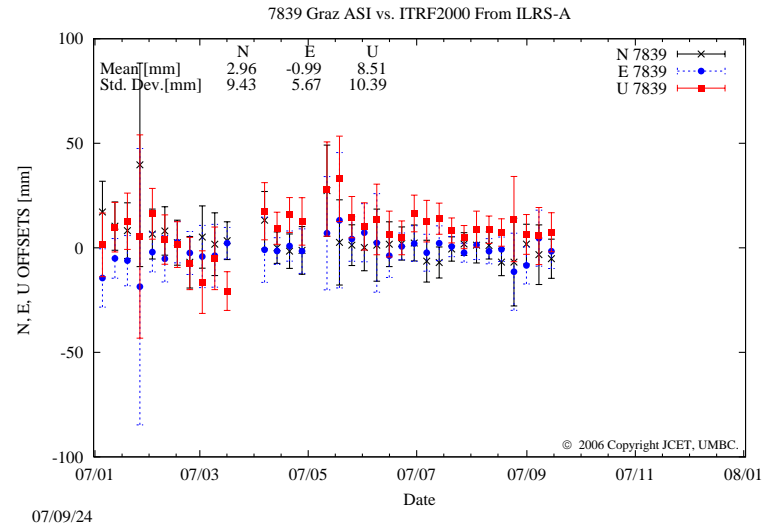
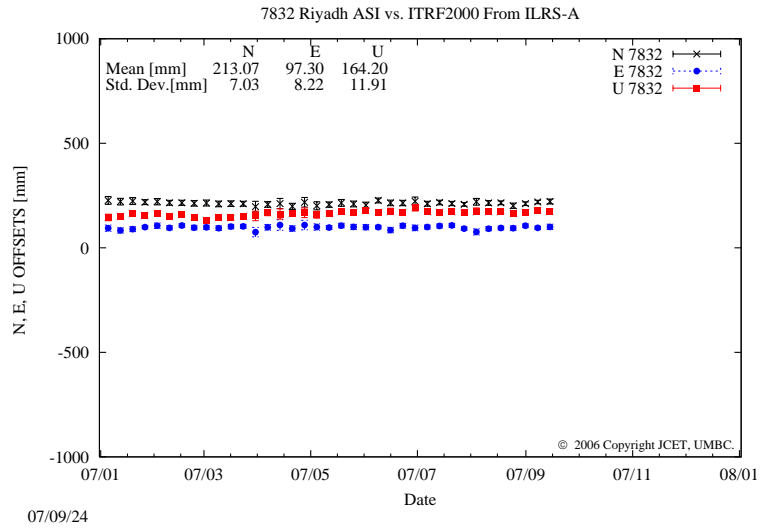
07/03/30

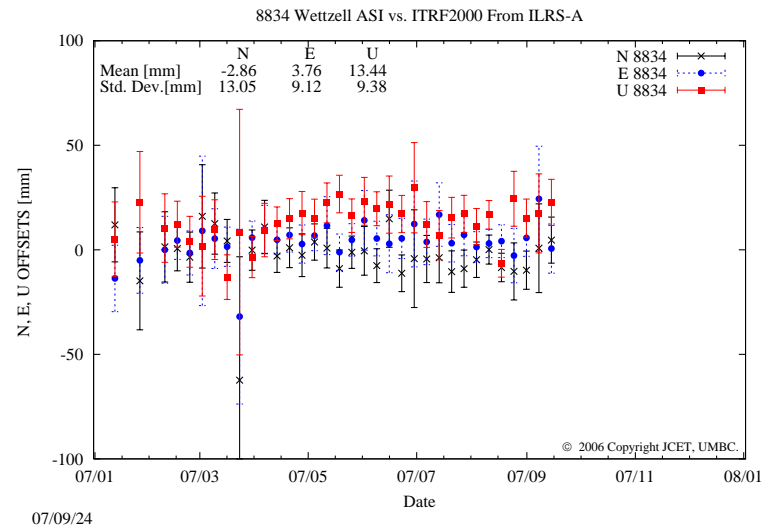
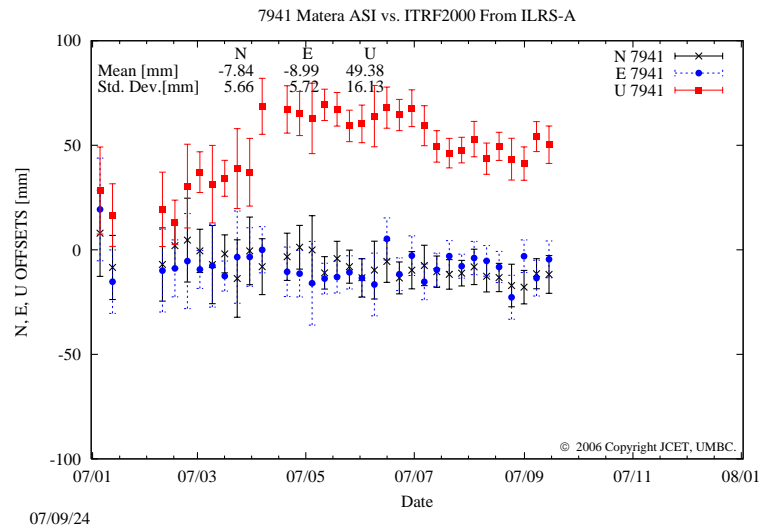
07/03/30











ASI N-E-U Statistics for date 070915

Site	N [mm]	E [mm]	U [mm]	σ N[mm]	σ E[mm]	σ U[mm]
1864	-20.16	-15.64	-21.79	79.38	25.31	146.73
1873	-	-	-	-	-	-
1884	-1.71	-0.30	57.60	27.64	25.29	75.77
1893	-	-	-	-	-	-
7080	11.02	-0.48	-21.40	17.08	7.09	8.63
7090	0.16	1.70	-3.21	3.01	3.08	4.96
7105	2.87	0.34	-3.67	10.82	11.36	13.66
7110	-5.47	-0.52	3.78	8.96	6.22	9.28
7124	-	-	-	-	-	-
7237	-25.05	35.68	22.86	16.56	18.62	42.48
7249	47.00	-11.95	-207.86	71.71	32.87	36.35
7308	46.10	33.44	7.83	11.52	18.79	13.64
7501	-5.45	-8.39	5.83	18.82	13.90	11.45
7810	4.65	0.85	-27.13	7.31	5.73	14.58
7811	7.32	5.39	-22.54	24.91	18.12	19.33
7824	0.80	4.85	-91.72	14.67	12.62	23.21
7832	213.07	97.30	164.20	7.03	8.22	11.91
7838	-44.93	2.31	-46.19	10.32	13.75	16.72
7839	2.96	-0.99	8.51	9.43	5.67	10.39
7840	-3.87	-4.53	-11.18	5.87	4.86	8.84
7941	-7.84	-8.99	49.38	5.66	5.72	16.13
8834	-2.86	3.76	13.44	13.05	9.12	9.38