

# CPF Prediction Errors

Werner Gurtner

*Astronomisches Institut  
Universität Bern, Schweiz*

ILRS Fall Workshop 2007

Grasse

25–28 September 2007

# CPF Prediction Errors

$u^b$

<sup>b</sup>  
UNIVERSITÄT  
BERN

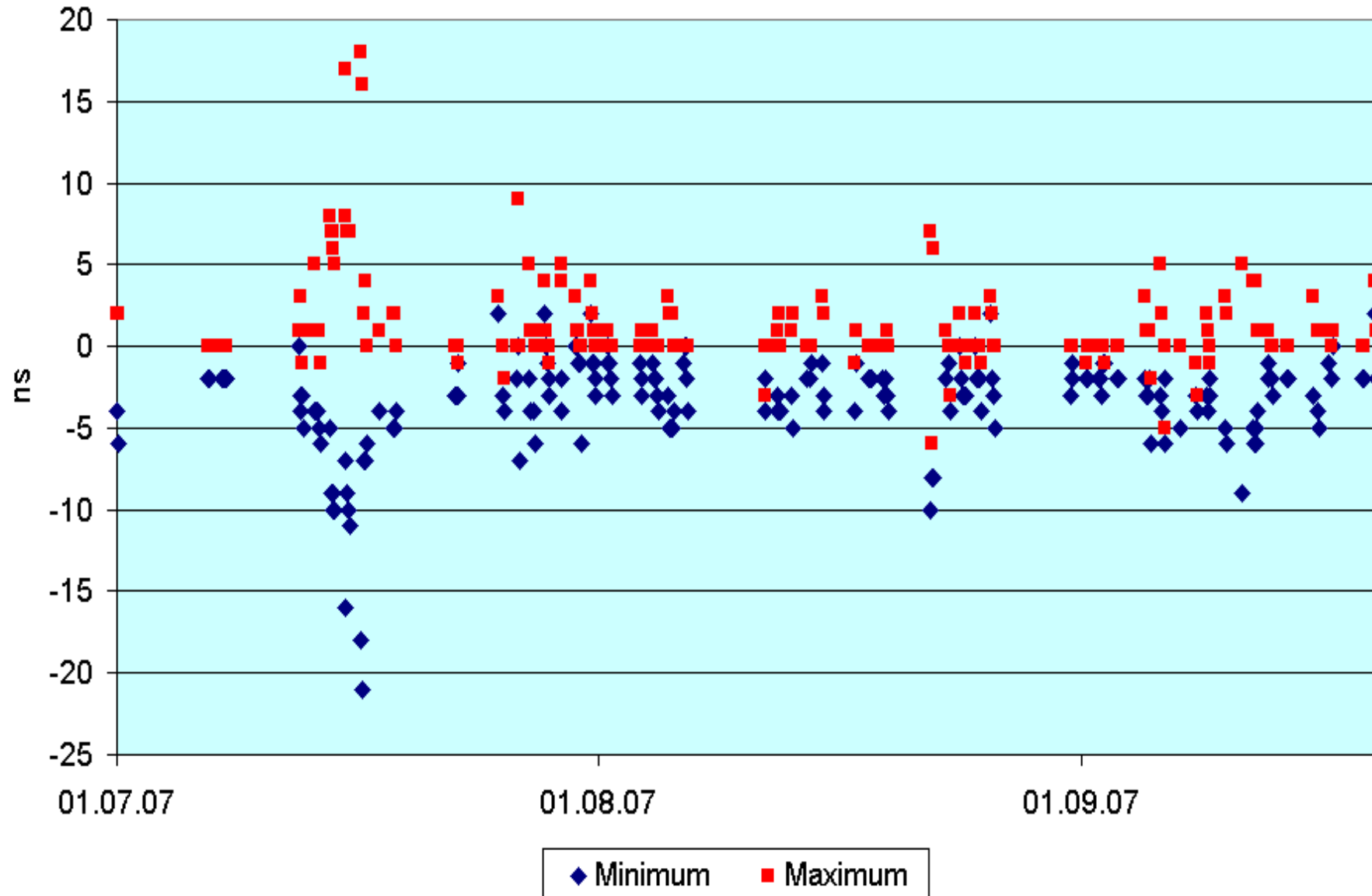
- Differences

*observed ranges minus predicted ranges*

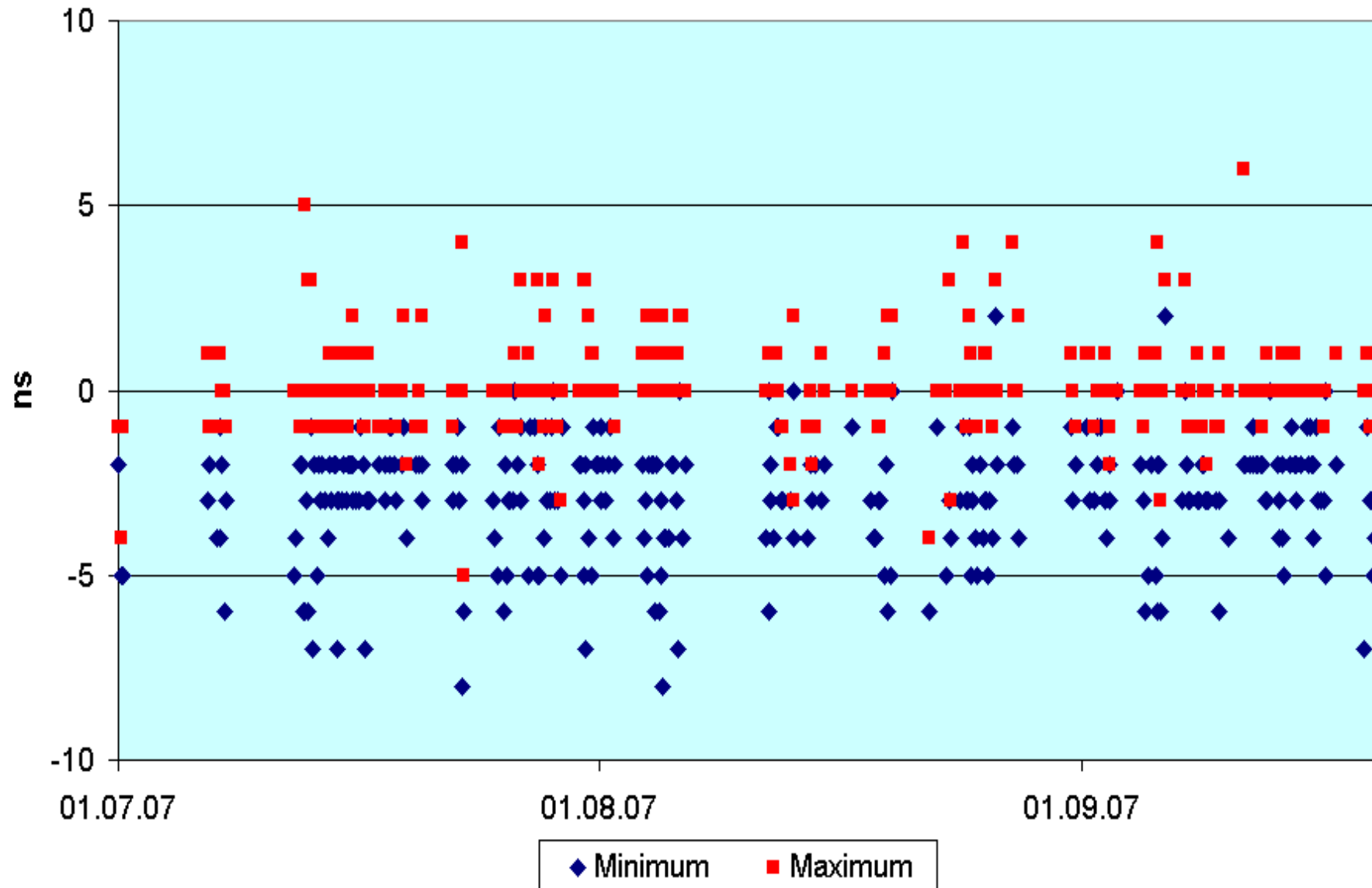
determined in real time, stored with the data

- Extract largest and lowest values per pass
- Extreme values depend on actual pass coverage
- Plot values (round trip time, ns) between July 1<sup>st</sup> and Sept 20, 2007 per satellite

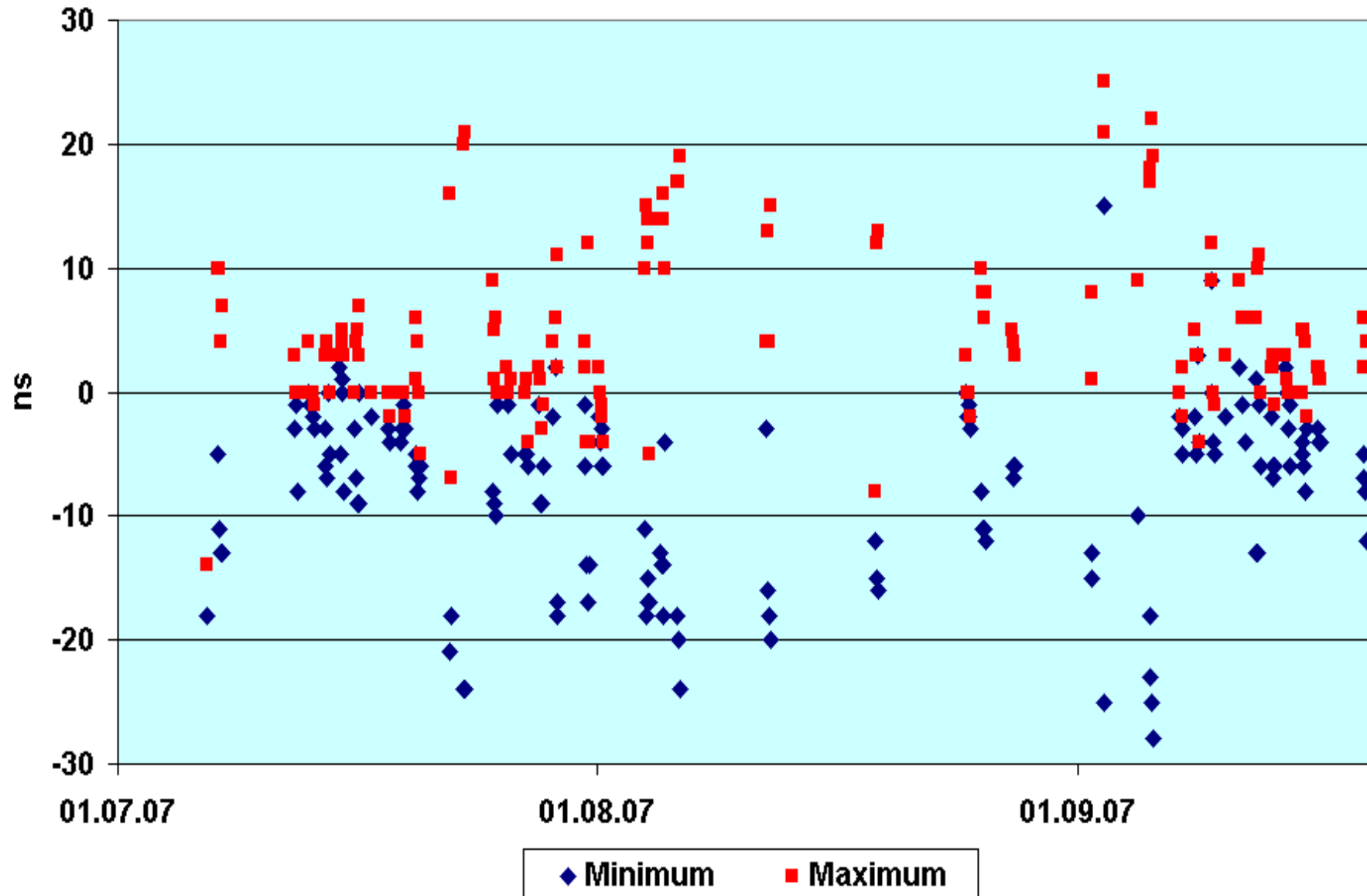
### Ajisai HTS CPF Prediction errors



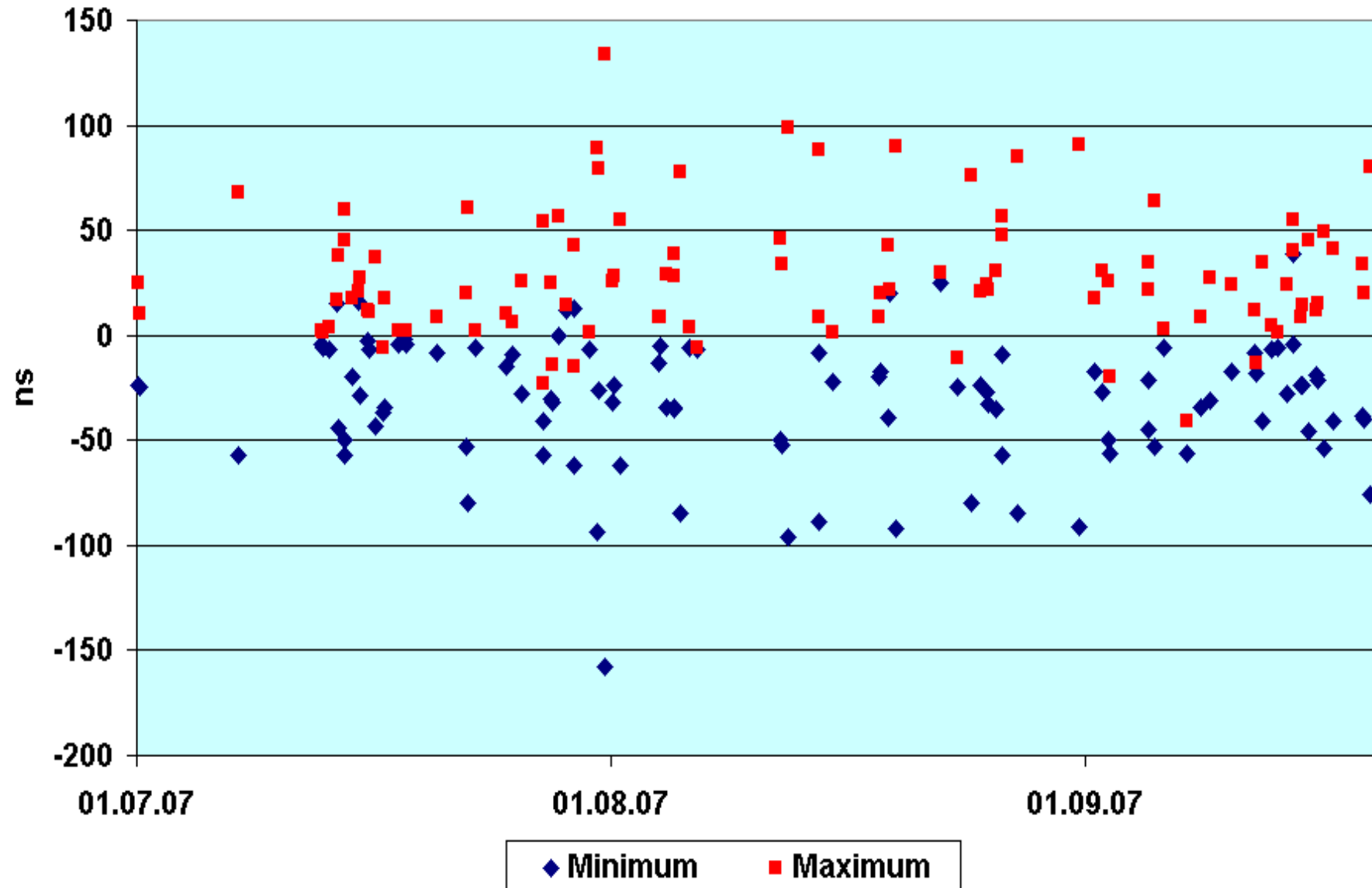
# Lageos 1/2 HTS CPF Prediction Errors



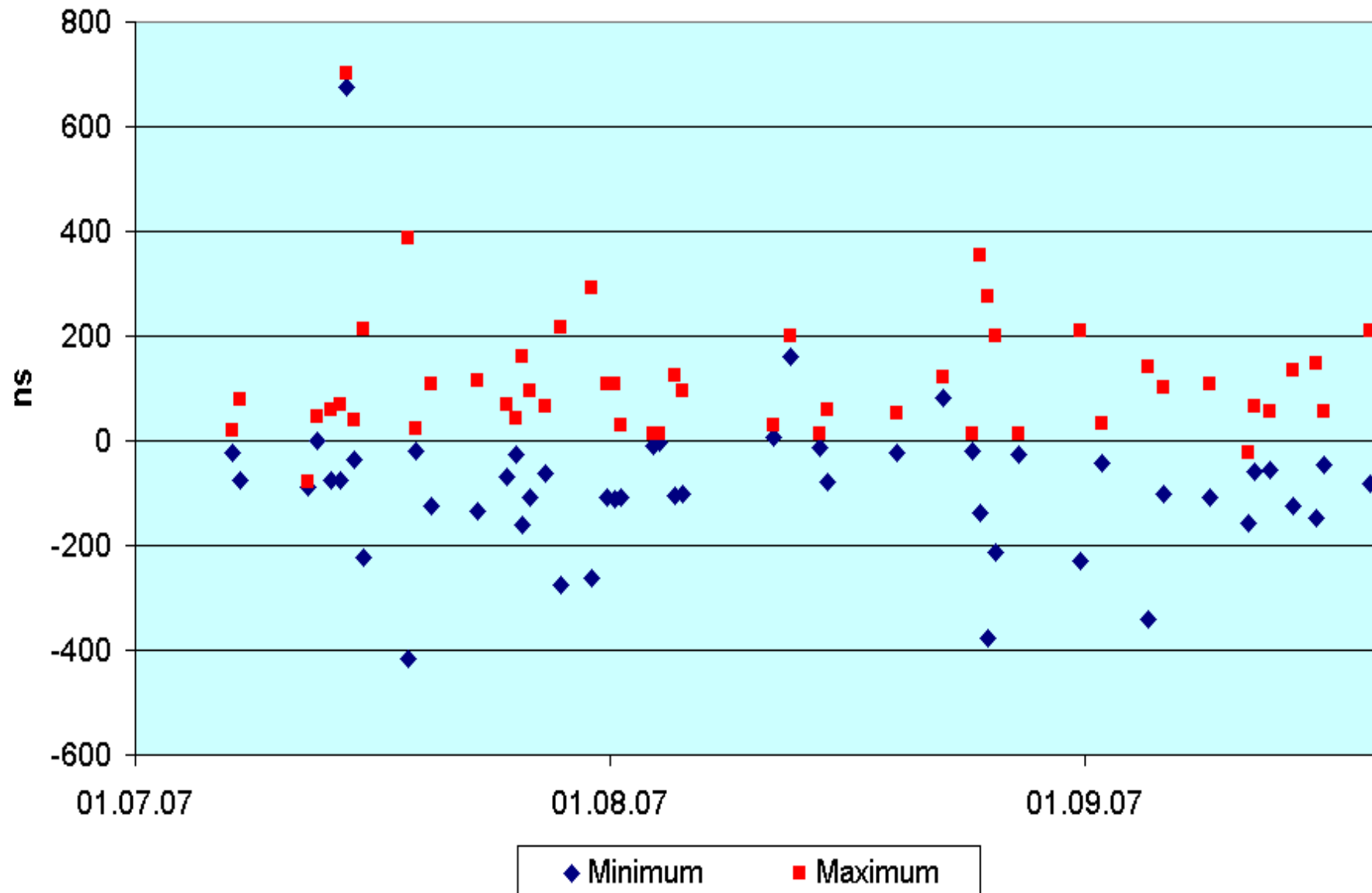
### Starlette HTS CPF Prediction Errors



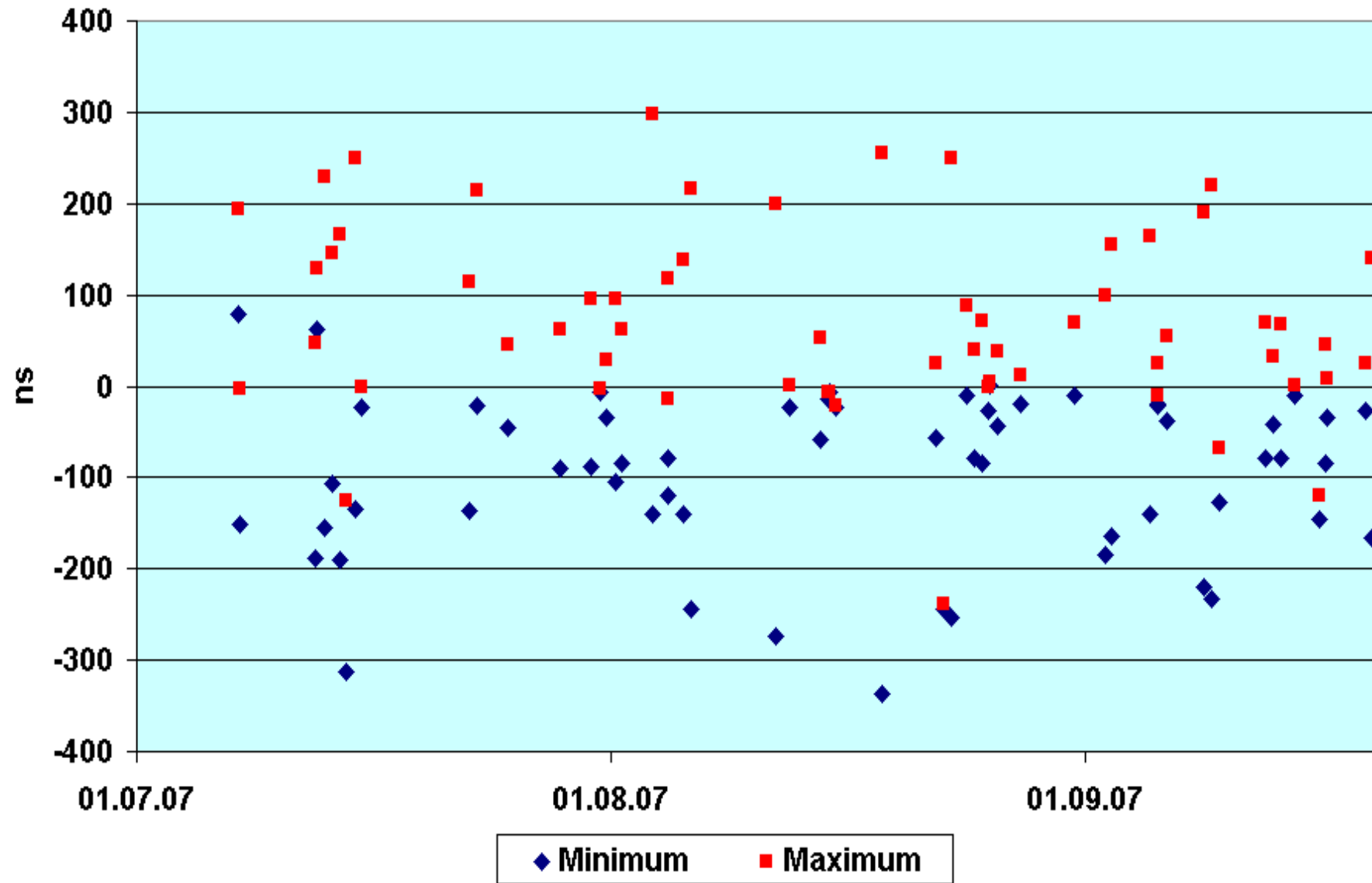
### Stella HTS CPF Prediction Errors



### Champ GFZ CPF Prediction Errors

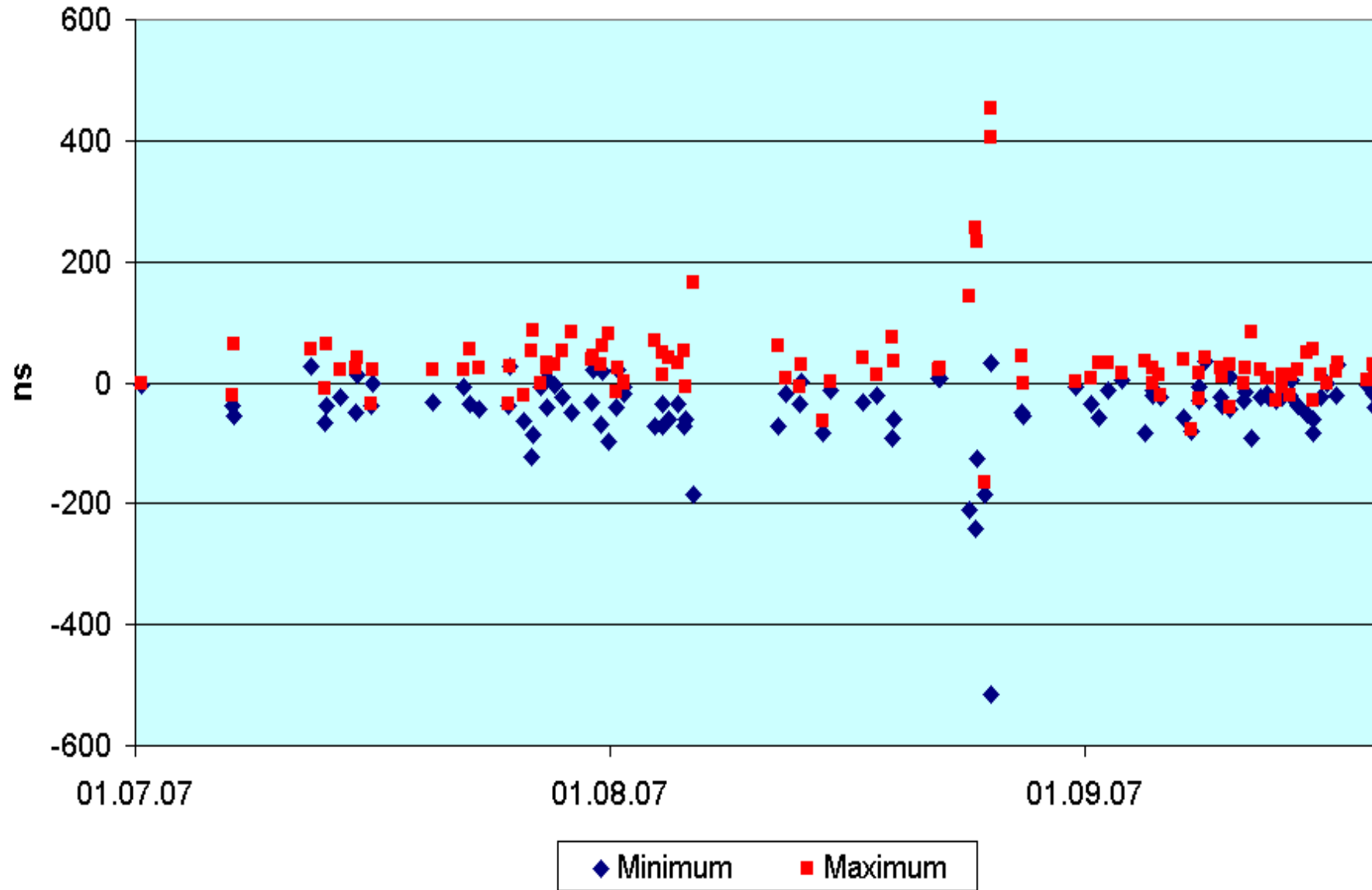


## TerrasarX GFZ CPF Prediction Errors

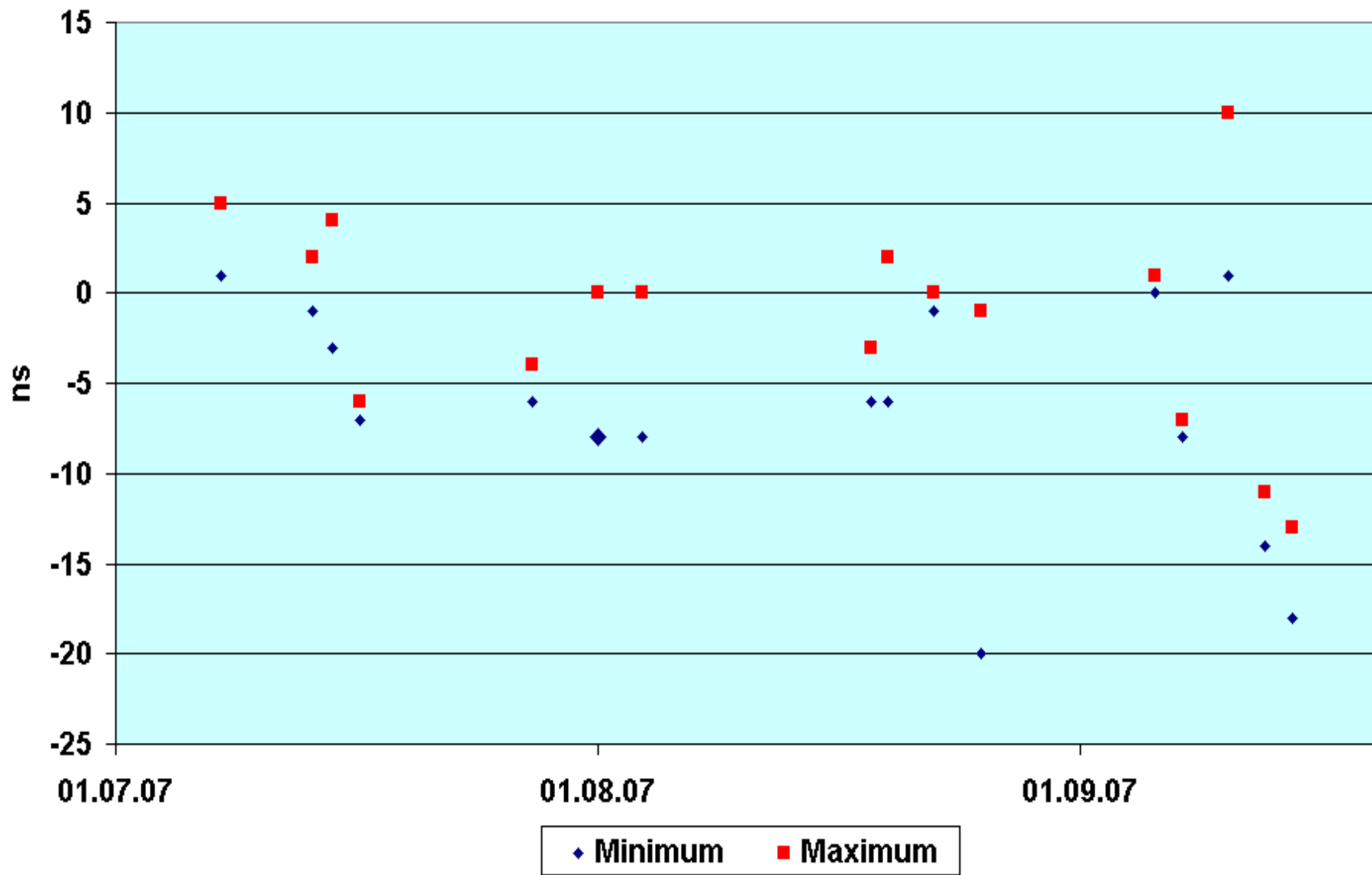




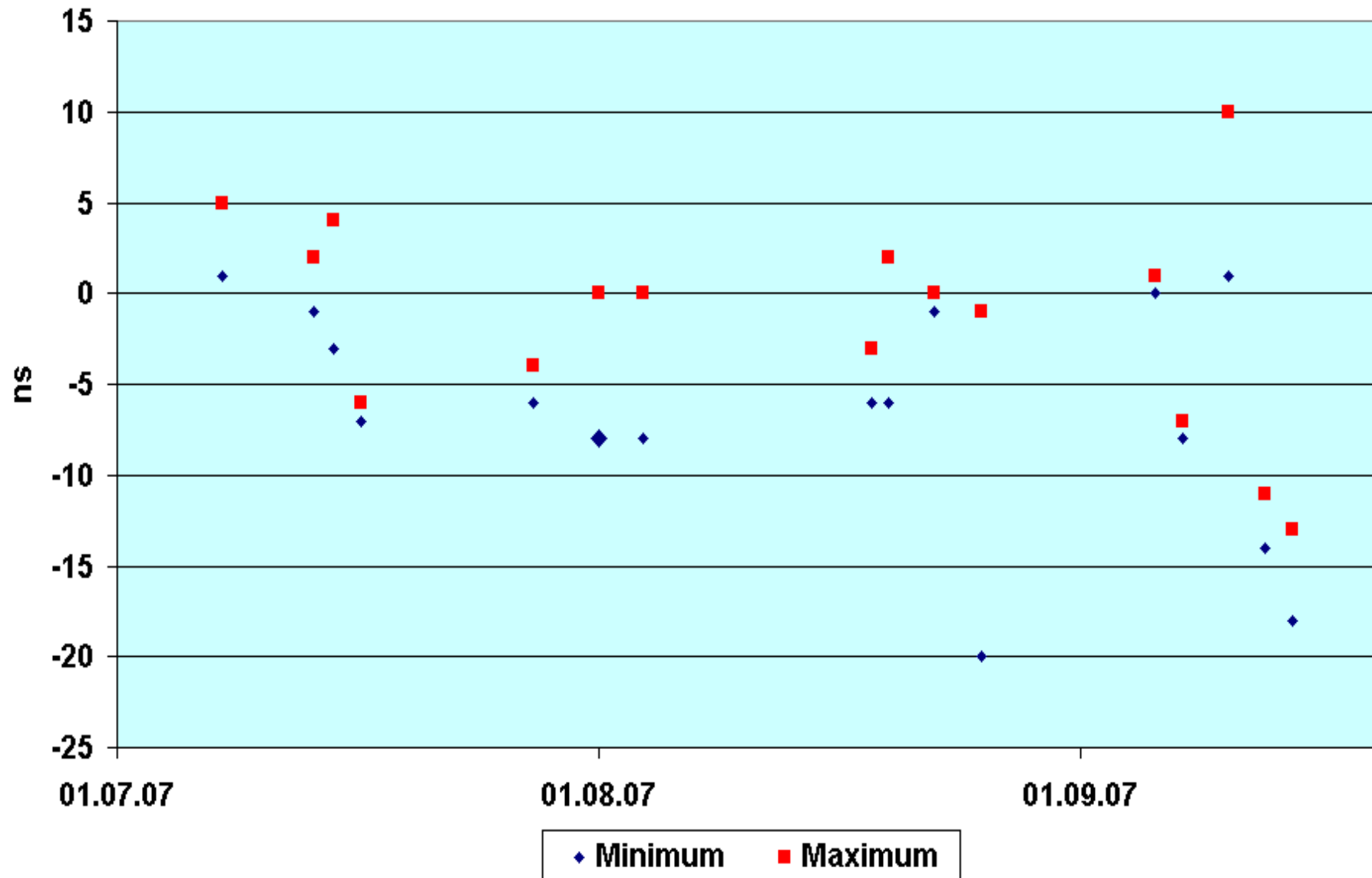
# Envisat ESA CPF Prediction Errors



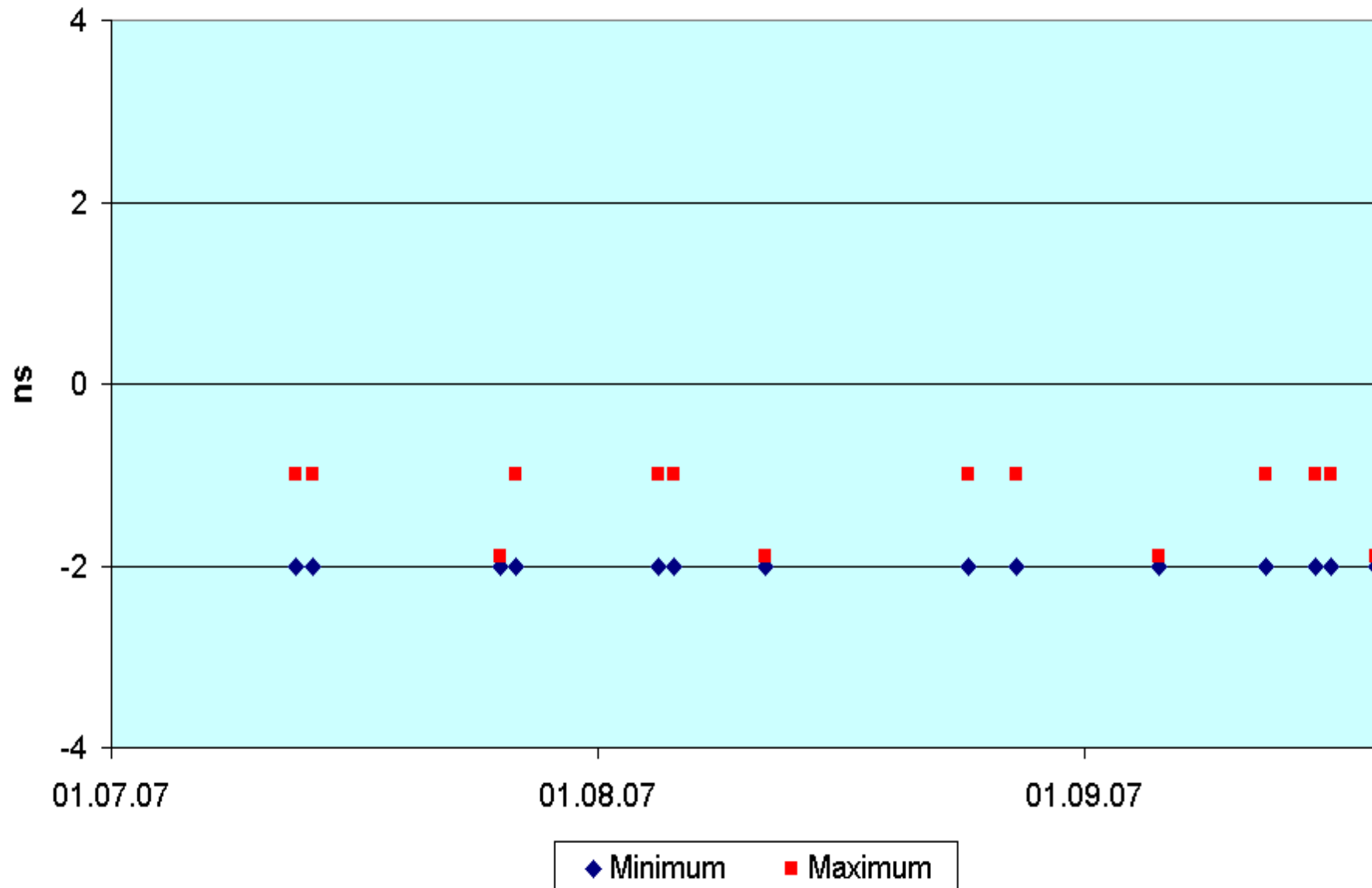
## Giove-A ESA Prediction Errors



## Giove-A ESA CPF Prediction Errors



### GPS 35/36 COD CPF Prediction Errors



# Glonass-95 COD CPF Prediction Errors

